





# MANIFESTO

You cannot plan for originality.

But you can strive.

You can strive for craftsmanship that  
can withstand every use and abuse  
...and still survive.

You can strive for design that is not seduced  
by cheap tricks or transient trends.

You can strive for a quality that,  
as it lives and breathes through the ages,  
becomes more beautiful, more attractive.

You can strive for an unarguable aesthetic  
that transcends any reproach, any criticism.

You can strive to make every detail immortal.

You can strive to, even in this day and age,  
create something truly pioneering.

And with fair winds and dedication, it might just be,  
you create something a little more permanent.

A legacy

A Modern Original.

# WELCOME TO THE WORLD OF FREDERICIA

Times change, they always have. With them change our opinions, activities and inspirations. Especially now, with our accelerating culture of technology and information - it feels that each minute must count for something.

Naturally, Fredericia is part of this swirl of life, but our approach to design is almost the reverse. We ask, what if we could slow time for you? Our Modern Originals collection aims to do precisely that. Offering a sanctuary of timeless aesthetics and genuine style; all rooted in exceptional craftsmanship, authentic design and finest materials. We create a history worth remembering.

## CREATING A PERFECT BALANCE

Our collection book moves from the historic apartment of celebrated Danish painter, Vilhelm Hammershøi to the contemporary interior of the Fredericia showroom in Copenhagen. The atmosphere of these locations radiates a restrained elegance and serenity - striking a perfect balance with the busy world outside; and forming an unmistakable feeling of home and comfort.

We see the accord between the ways we live and interior design. Shapes, colours and tactile surfaces interact with the mind, body and soul. Creating environments that relax, enliven and inspire is essential for human wellbeing and performance. For this reason, we see the comforting ambience of residential homes moving into professional workspaces, intimate hotel lounges and luxurious restaurants – places where we want to create warm atmospheres and positive experiences.

Whether we pique your curiosity with the iconic works of Børge Mogensen and Nanna Ditzel or you fall in love with the contemporary designs by Jasper Morrison or Space Copenhagen, we hope you will take a moment to relax and feel inspired with our new collection of Modern Originals.

Get inspired, and feel at home.



THOMAS GRAVERSEN  
Owner





# CONTENT

THE HISTORY OF MODERN ORIGINALS • 8

OUTSTANDING CRAFTSMANSHIP AND  
CUTTING-EDGE TECHNOLOGY • 12

FROM MATERIALS TO EXPERIENCES • 14

COLOUR WORLDS BY FREDERICIA • 16

RESIDENTIAL, CORPORATE AND HOSPITALITY • 18

MEET OUR DESIGNERS • 20

THE COLLECTION • 22

THE CATALOGUE • 88

INFO • 122

# THE HISTORY OF MODERN ORIGINALS

*Founded on the principles of exceptional craftsmanship, authentic design and finest materials, Fredericia manufactures extraordinary pieces of furniture that become more beautiful with age, making them treasured from one generation to the next.*

**1911** Fredericia is established as Fredericia Stolefabrik.



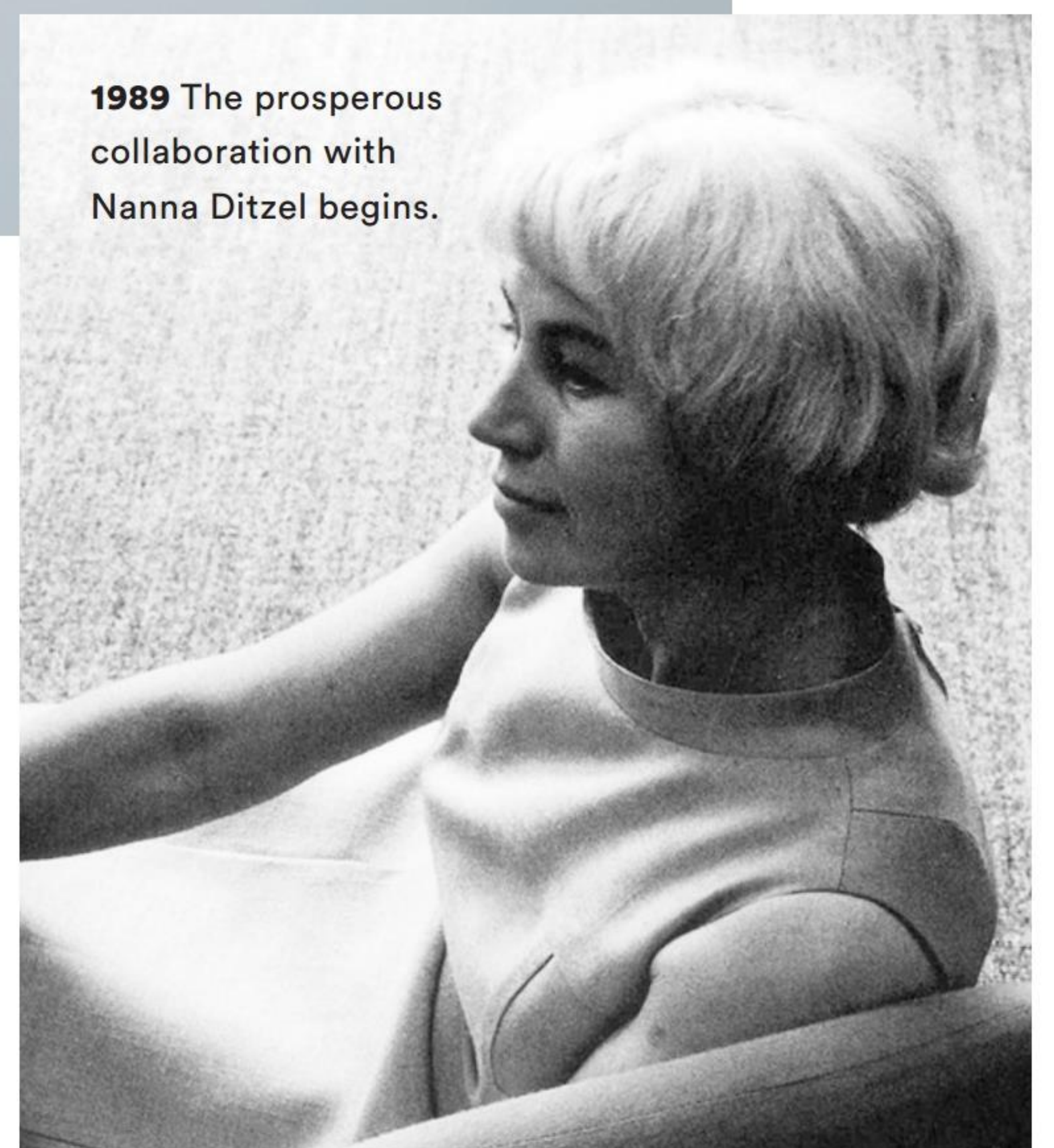
**1958** The iconic Spanish Chair by Børge Mogensen.



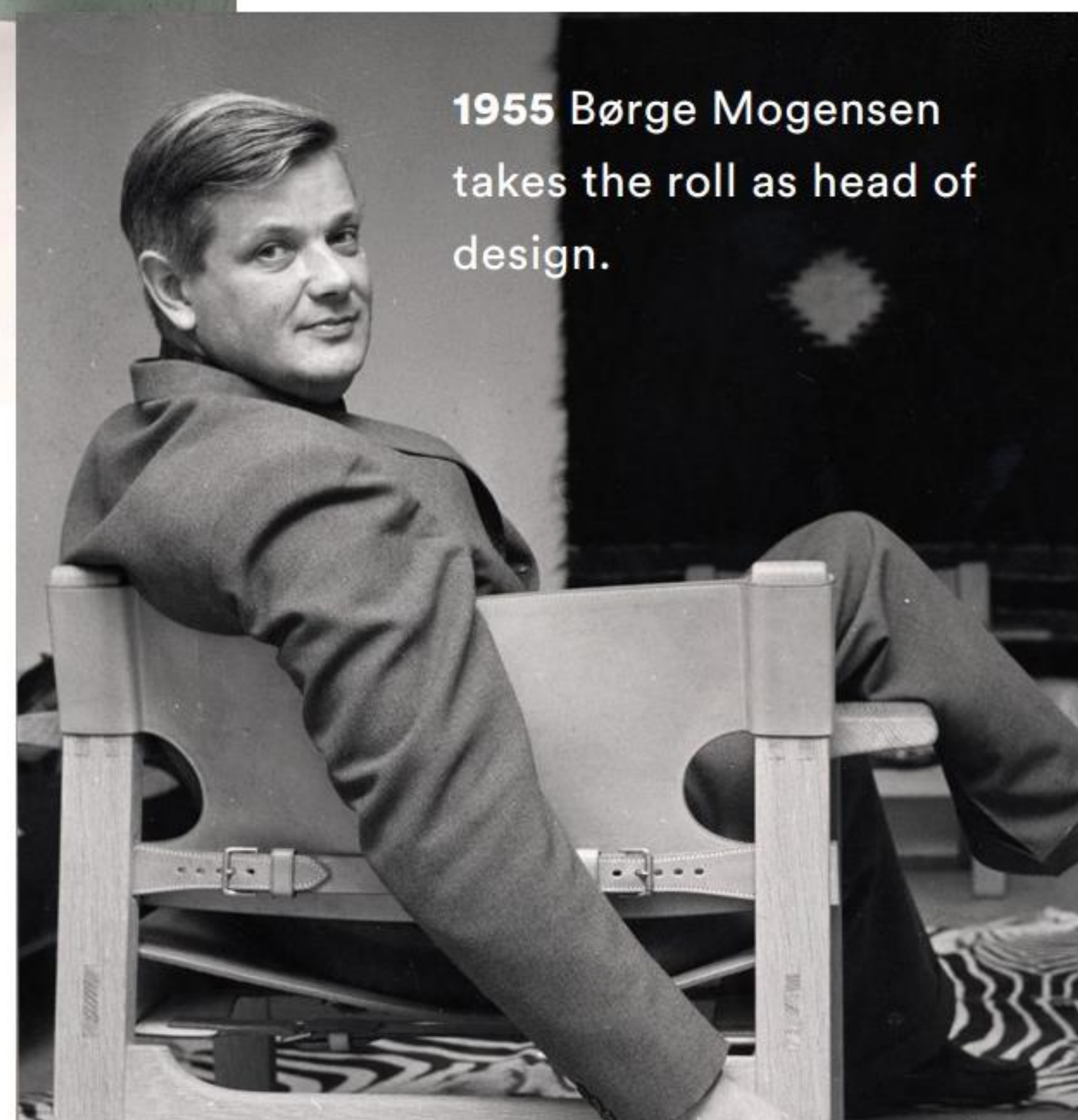
**1944** Hans J. Wegner's wooden rocking chair J16 is developed as part of the "Danish Modern" movement.



**1989** The prosperous collaboration with Nanna Ditzel begins.



**1955** Børge Mogensen takes the roll as head of design.

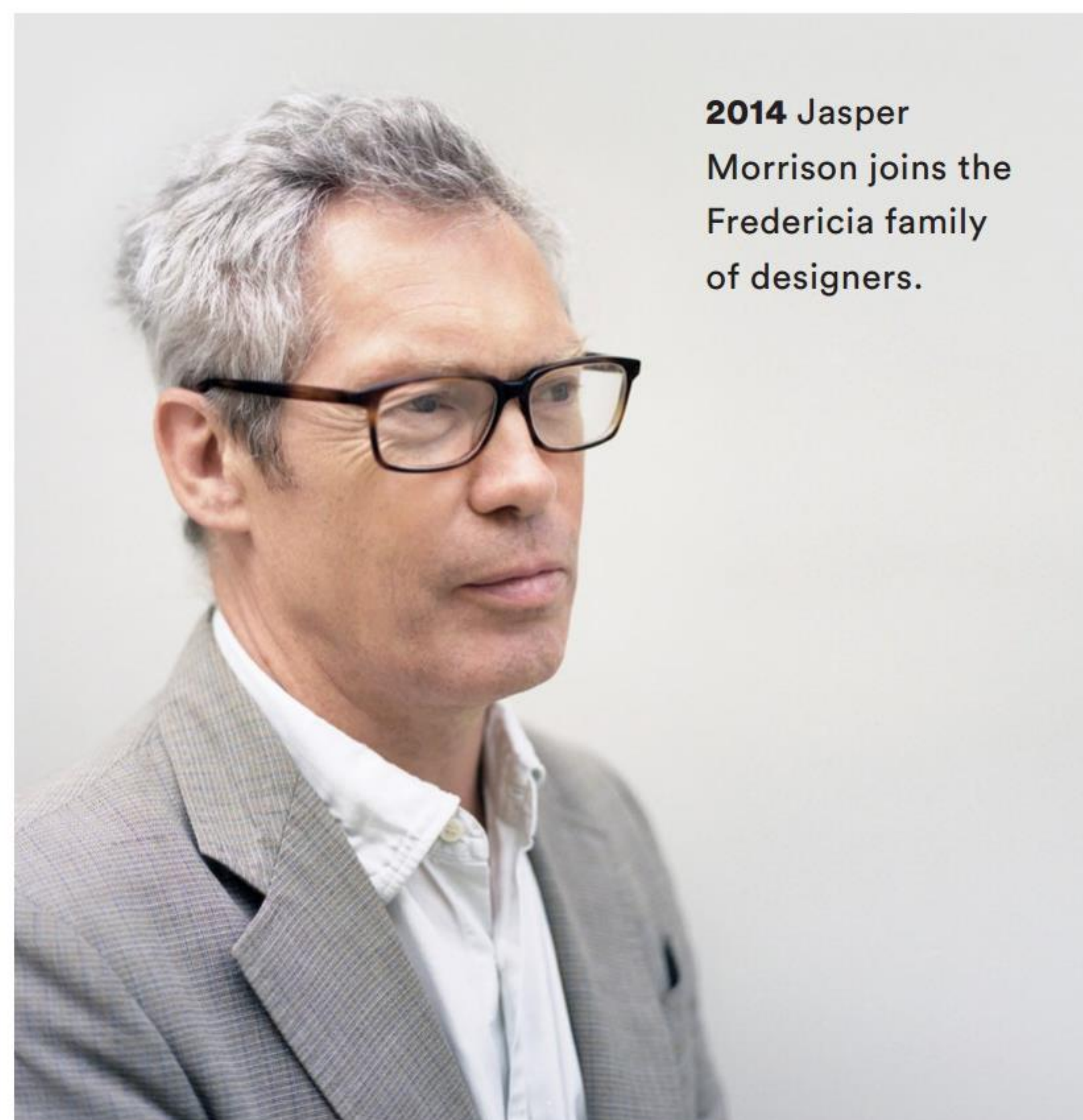




**2011** Spine Collection by Space Copenhagen.



**2014** Jasper Morrison joins the Fredericia family of designers.



**2013** Pato Collection by Welling/Ludvik. Today, the largest collection of the Fredericia portfolio.



**1998** Gallery stool by Hans Sandgren Jakobsen. Awarded with more than 20 international design recognitions.



**1993** Nanna Ditzel designs the Trinidad chair, which becomes an immediate success.



The history of Fredericia began in 1911 when the Ravnsø family established the company in the Danish town of Fredericia. Consistently focused on exceptional craftsmanship, finest materials and authentic design, Fredericia was renowned for its furniture, first and foremost chairs – hence the company was named Fredericia Stolefabrik meaning ‘chair factory’. The Ravnsø family operated Fredericia until 1955 when Andreas Graversen acquired the company, bringing new spirit and direction to the organisation.

Graversen integrated Fredericia’s heritage of high-quality furniture with innovation by making the young Børge Mogensen head of design. Børge Mogensen infused the collection with his functional and refined approach; seen as considerably avant-garde for its time. Andreas Graversen often described Børge Mogensen as “unpretentious, pure and honest.” The same attributes now characterise his unique furniture designs, especially with masterpieces such as the Spanish Chair, the dining chair J39, and the eminent Søborg collection. Their fruitful partnership lasted until Mogensen’s passing in 1972.

#### THE NEXT GENERATION TAKES OVER

In 1989, Andreas’ son Thomas Graversen joined Fredericia with Nanna Ditzel, one of the most prominent figures of Danish design who developed the collection until 2005. With an uncompromising >>>

approach to quality and the ability to transform her artistic dreams into both functional and sophisticated designs, she set new standards in the design scene. Among the most respected and award-winning works during this period are the Trinidad chair (by Nanna Ditzel herself), the Gallery stool by Hans Sandgren Jakobsen and the Stingray rocking chair by Thomas Pedersen.

Today, Thomas Graversen and CEO Kaja Møller lead the company to new heights together with a growing team of passionate staff and a carefully chosen circle of international designers.\* By combining established names such as Jasper Morrison and Space Copenhagen with rising stars like Geckeler Michels and Hugo Passos, the new Modern Originals collection both celebrates and pays homage to Fredericia's unique design philosophy.

In January 2017, the collection moved into an exclusive showroom at the top of the former Royal Mail House in central Copenhagen. With 1,100 square metres across two floors, Fredericia charts the entire company story from its founding in 1911 to today. Visitors can experience the latest innovations alongside classic design icons and historic pieces like the original prototype of Børge Mogensen's famous 2213 sofa designed in 1962. 

*\*find all our designers on page 20*

2017 Grand opening of new rooftop showroom in central Copenhagen.










## OUTSTANDING CRAFTSMANSHIP AND CUTTING-EDGE TECHNOLOGY

*Traditional and innovative disciplines converge in the design  
of every piece of furniture Fredericia conceives.*



At Fredericia, outstanding craftsmanship and cutting-edge technology go hand in hand when it comes to the tactility, expression and the longevity of each product that leaves the factory. All upholstery and carpentry are refined by a team of highly skilled staff; guided by an endless passion for the materials and a keen eye for the detail.

However, traditional crafting methods are no longer enough to meet the diverse needs of an international marketplace with distinct requirements for the interior settings of the home, workplace and restaurant. Materials other than wood and steel are essential in creating new forms and functions – quite the challenge when handcrafted aesthetics and finishes are so highly prized.

Thorough research and development are the keys to success when melding the disciplines of craftsmanship and technology and Fredericia's results speak for themselves, as all plastic surfaces are characterised by a hardwearing, silky smooth feel and look without showing any signs of being machine-made. 

# FROM MATERIALS TO EXPERIENCES


*Flawless leathers, fine woods and exclusive fabrics are essential in the composition of each piece Fredericia creates. These elements define both personality, and sculptural form; like a tailored dress defines the expression of its owner.*





The meticulous selection of materials has always been of the utmost importance to Fredericia. Only the best natural materials combined with a craftsmanship of the highest standard can create a Fredericia classic.

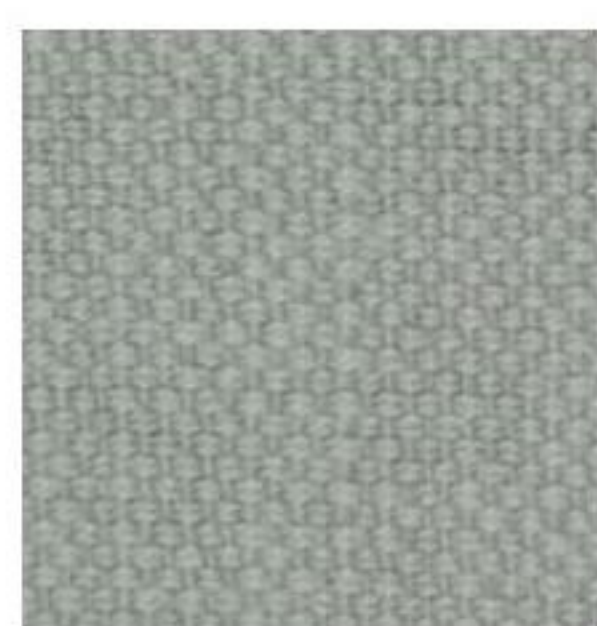
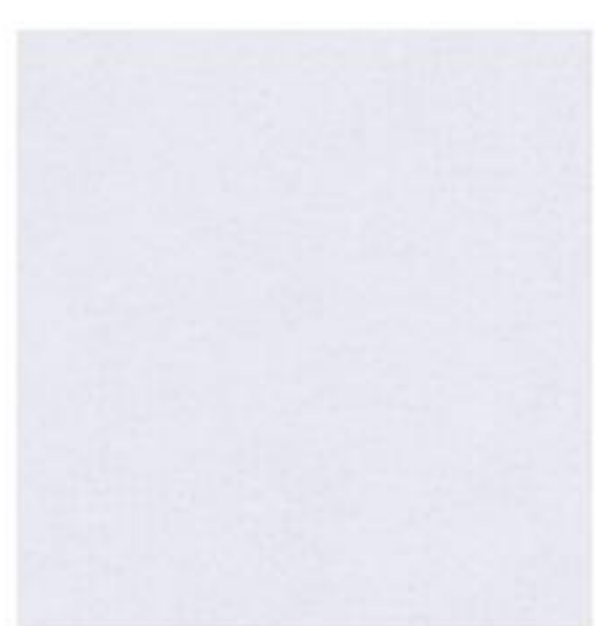
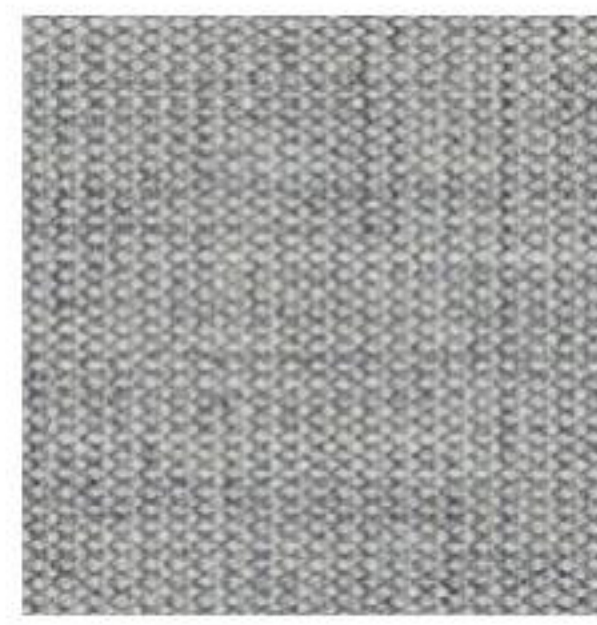
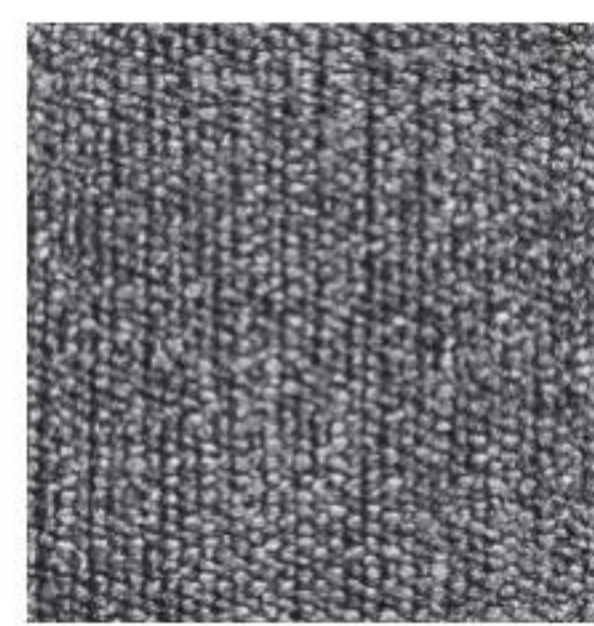
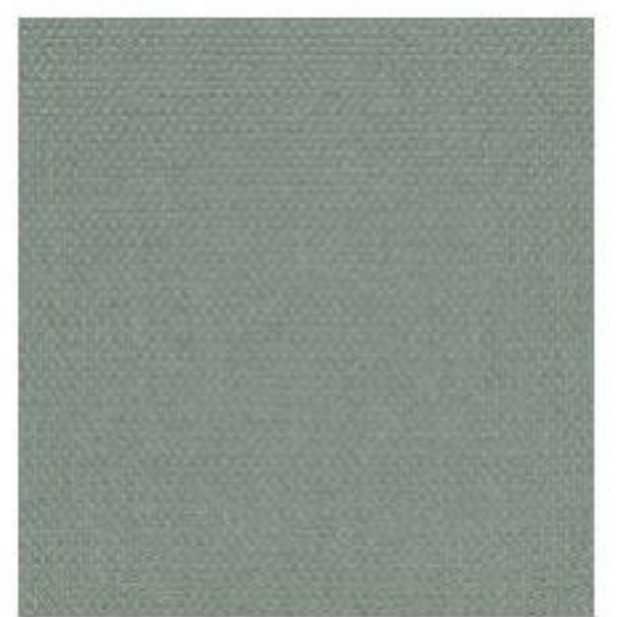
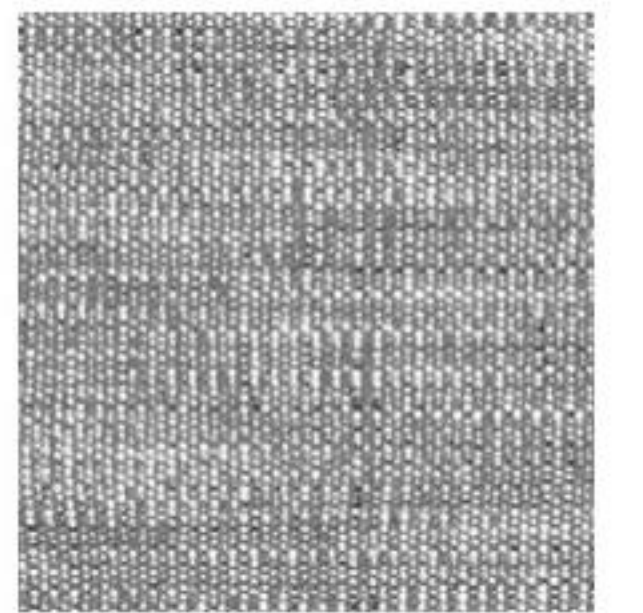
With prime leathers and nubucks from responsibly sourced Scandinavian livestock; the finest woods from sustainable European forestry and exclusive fabrics from trendsetting international textile manufacturers, each element of a Fredericia piece is carefully considered to create extraordinary experiences - whether working, relaxing or hosting a dinner with friends and family.

Natural materials like wood and vegetable-tanned leather only gain more beauty and character with age; developing a warm patina over the years - becoming a testament of time as Fredericia's Modern Originals are made to be companions for life. 



## COLOUR WORLDS BY FREDERICIA

*To help you navigate the vast swathes of fabrics,  
leathers and colours available, Fredericia has  
curated a refined materials toolbox to help make  
your choices as simple as possible.*







Choosing the right upholstery to complement your interior can be quite a journey. The choice of fabric, leather and colour is crucial in the expression of each furniture piece and the role it plays in the interior – whether the style evokes classic restraint, contemporary boldness or daring creativity.

Fredericia's timeless mix of soft, natural shades rooted in Scandinavian nature stands outside of fast-moving trends with a long-lasting style that reflects the spirit of your time and place.

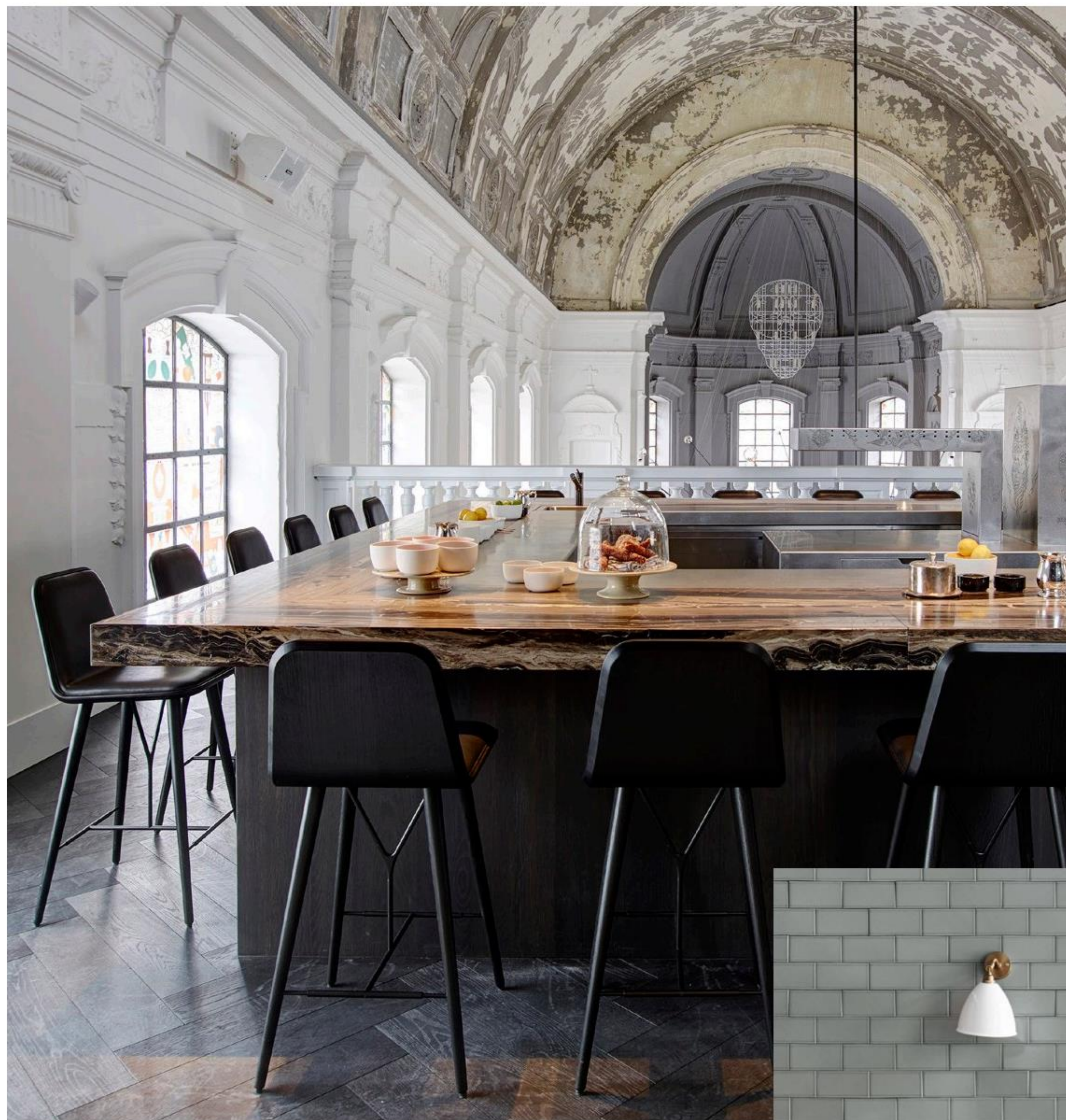
The fabrics produce a variety of tactile experiences that gravitate from heavy to light, from delicate to bold, and from calm to lively - awakening the senses in the ambience you want to create.

Dive into Fredericia's world of colours and create your own unique piece of furniture. 


RESIDENTIAL,  
CORPORATE AND  
HOSPITALITY

*Creating environments for people to relax,  
to work or simply to feel at home – anywhere.*





Fredericia believes that interior design functions as a mirror that can reflect the unique identity and expression of the individual, family or organisation. This is why Fredericia seeks to create environments with warm atmospheres that adapt to humans providing a feeling of comfort and wellbeing whether they are relaxing at home, focusing at work or unwinding at a vibrant hotel bar.

Functionality, longevity and sustainability are essential aspects that permeate every element of the Fredericia collection. Each piece is defined by its versatility and distinct appearance; making it the perfect choice across a spectrum of settings: from intimate to grand, formal and informal - all over the world. 

# MEET OUR DESIGNERS

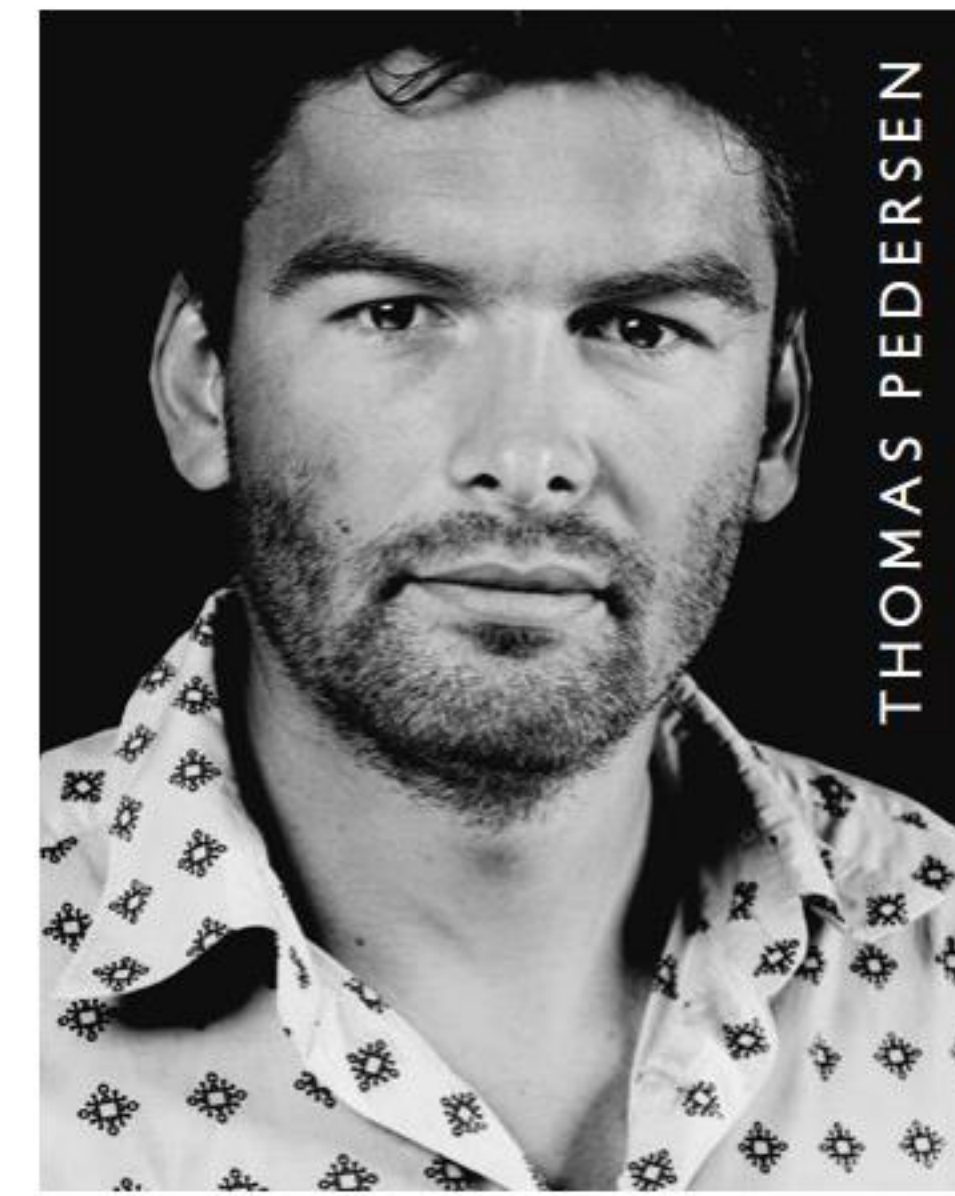
*Ever since the foundation in 1911, Fredericia has built up a strong tradition of beautiful craftsmanship and innovative design, developed in close collaboration with a carefully chosen circle of internationally recognised designers.*



HUGO PASSOS



GAMFRATESI



THOMAS PEDERSEN



SUSANNE GRØNLUND



CECILIE MANZ



TIMO RIPATTI



GECKELER MICHELS



WELLING / LUDVIK



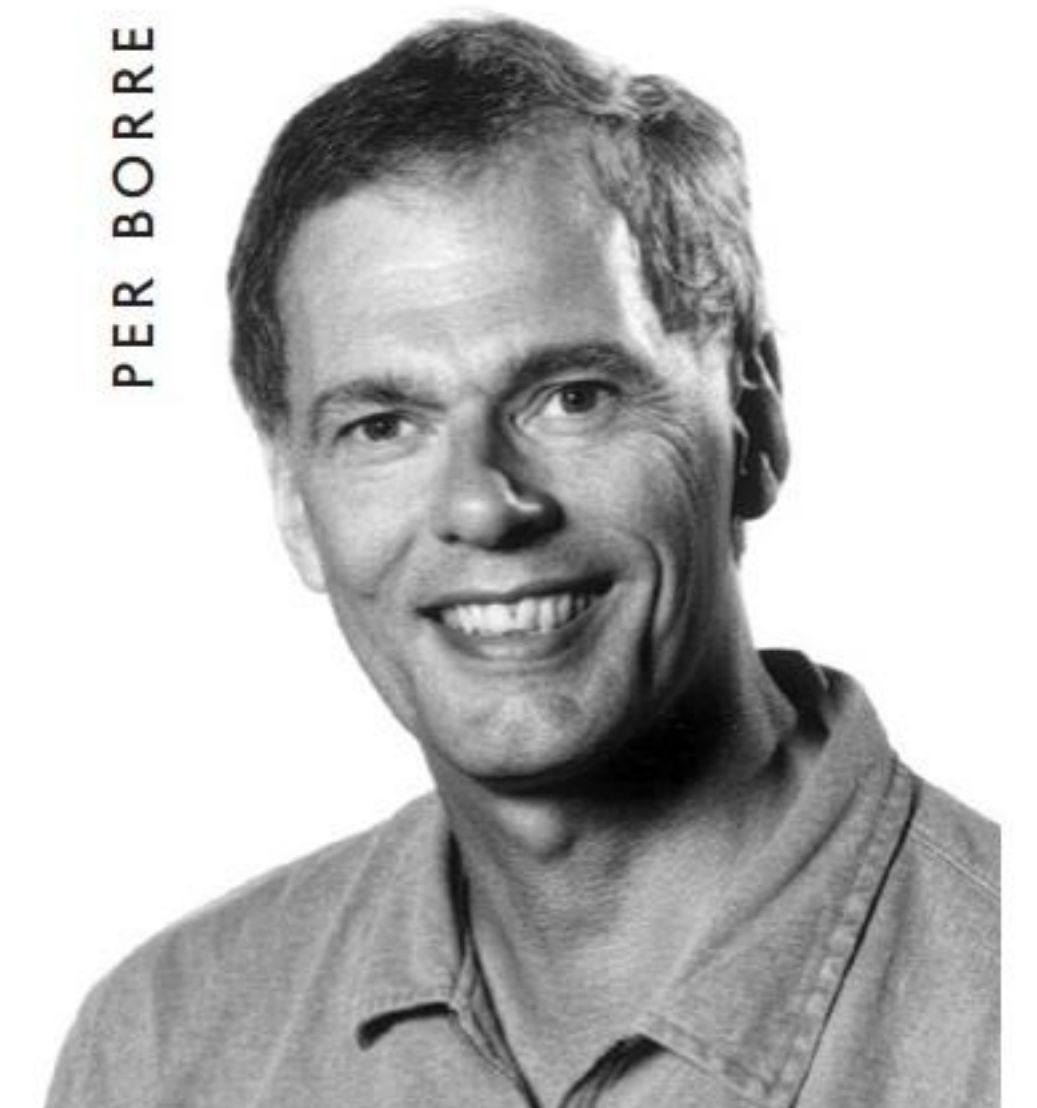
BØRGE MOGENSEN (1914 - 1972)



NIELS JØRGEN HAUGEN  
(1936 - 2013)



OEO STUDIO



PER BORRE



ARDE



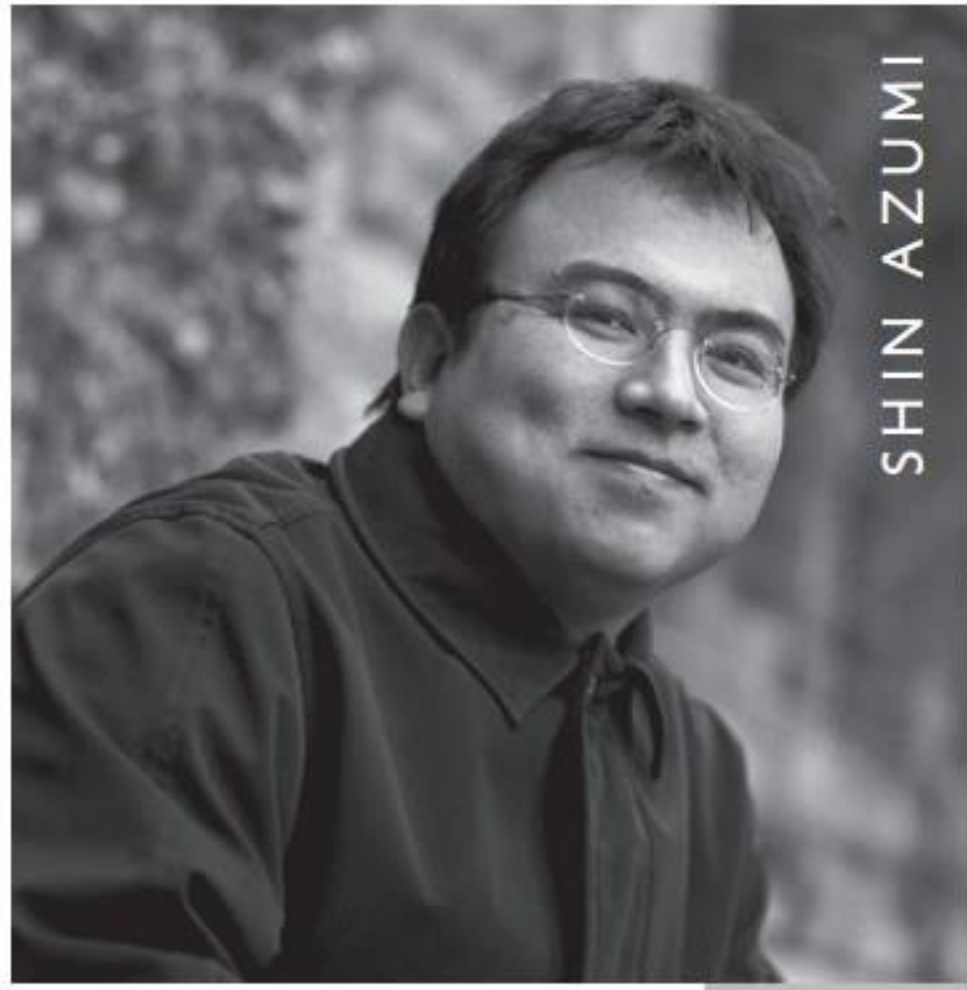
HANS SANDGREN JACOBSEN



JASPER MORRISON



NANNA DITZEL (1923 - 2005)



SHIN AZUMI



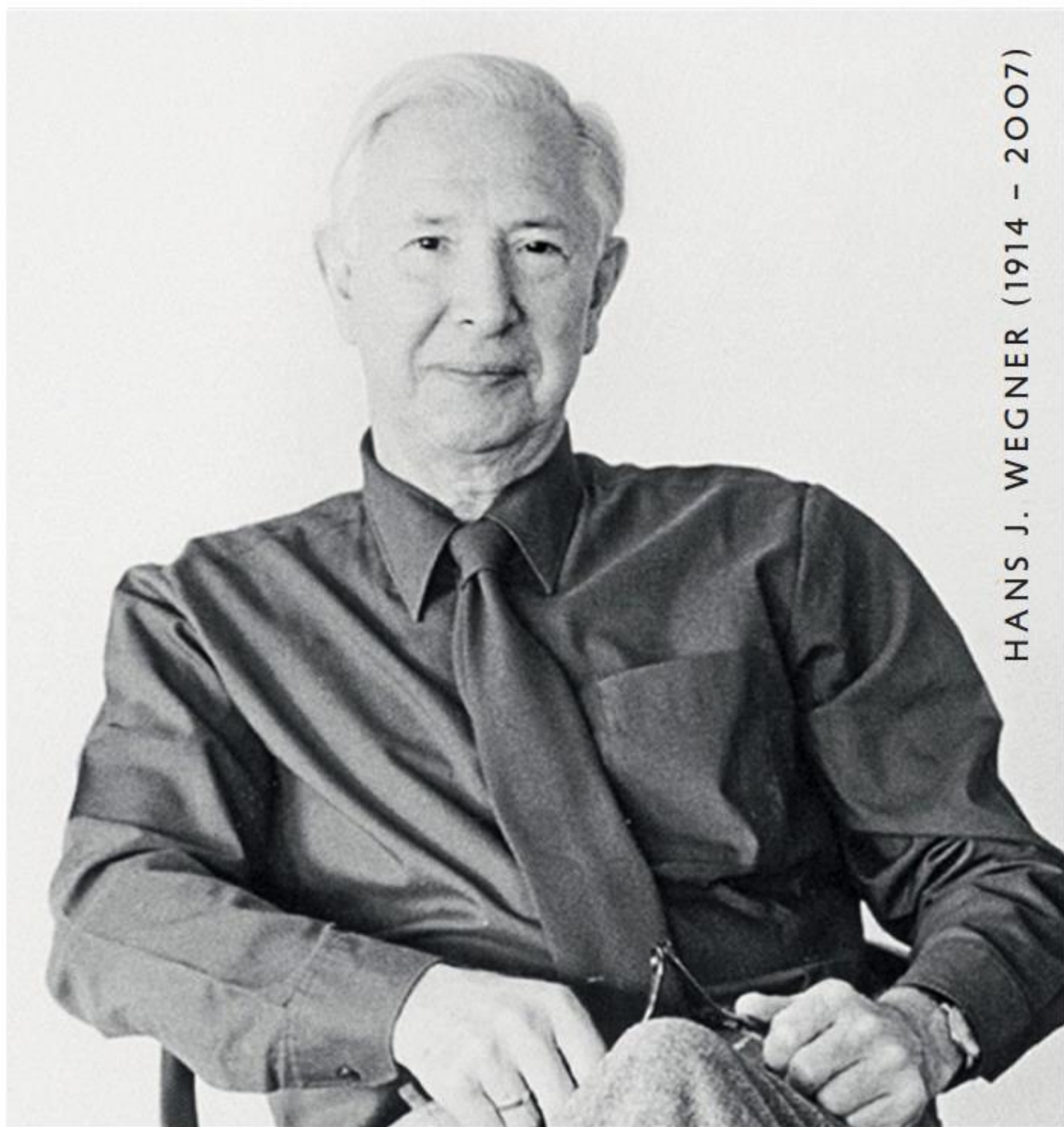
SPACE COPENHAGEN



AURÉLIEN BARBRY



EJVIND A. JOHANSSON (1923 - 2002)




HANS J. WEGNER (1914 - 2007)



THAU & KALLIO

Fredericia takes pride in collaborating with an international community of iconic designers. Both established names and rising stars work alongside each other, passionately sharing Fredericia's design ethos of beautifully crafted pieces that remain relevant and aesthetically intriguing.

Fredericia understands these collaborations as partnerships based on a deep mutual trust – forming a creative culture characterised by artistic expression, material expertise and industry knowledge. This core philosophy has shaped all product development since the company's beginnings with iconic designers like Børge Mogensen and Nanna Ditzel, and it paves the way for inspiring future designs.

In this way, Fredericia will continue pushing the boundaries of what is possible, creating concepts that add value and atmosphere to any interior; always reflecting the company's design DNA and the spirit of the time. 

# THE COL

# LECTION







**Swoon Chair.** Space Copenhagen, 2016.

Fabric: Ria 141 by Raf Simons / Wood: Oak soap.

**2213 Sofa.** Børge Mogensen, 1962.

Leather: Vegetal Nature 90 Natural / Wood: Oak soap.

**Pon Table.** Jasper Morrison, 2015. Wood: Oak soap.

**2202 Ottoman.** Børge Mogensen, 1963.

Fabric: Ria 141 by Raf Simons / Wood: Oak soap.



**Taro Table.** Jasper Morrison, 2016. Wood: Oak oiled.

**Pato 4-leg Chair.** Welling/Ludvik, 2013.

Leather, fully upholstered: Soft 37 Grey / Frame: Quartz Grey.

Shell, polypropylene: Quartz Grey / Frame: Quartz Grey.

Fabric, fully upholstered: Sunniva 2 242 / Frame: Quartz Grey.



**The Spanish Chair.** Børge Mogensen, 1958.  
Leather: Saddle leather Natural / Wood: Oak soap.  
**Piloti Table.** Hugo Passos, 2016. Wood: Oak soap.



*“My goal is to create  
items that serve people  
and give them the  
leading role, instead  
of forcing them to  
adapt to the items”*

BØRGE MOGENSEN

**6284 Table.** Børge Mogensen, 1958.

Wood: Smoked oak. Extension leaf: Black lacquered.

**J39 Chair.** Børge Mogensen, 1947.

Seat: Black paper cord / Wood: Smoked oak stained.

**J63 Stool + J64 Chair.** Eivind A. Johansson, 1956.

Wood: Ash black lacquered.

**Pato Veneer Wood Base.** Welling/Ludvik, 2016.

Shell: Oak black lacquered / Frame: Oak black lacquered.







**Spine Lounge Petit.** Space Copenhagen, 2016. Leather: Vegetal Nature 90 Natural / Wood: Oak lacquered.



**Pon Table.** Jasper Morrison, 2015. Wood: Oak soap.

**3171 Bench.** Børge Mogensen, 1956.

Leather: Vegetal Nature 90 Natural / Wood: Oak soap.







**Kile Sofa.** Jasper Morrison, 2016. Fabric: Savanna 152 / Wood: Oak black lacquered.

**Piloti Table.** Hugo Passos, 2016. Wood: Smoked oak.

**Swoon Ottoman.** Space Copenhagen, 2018. Fabric: Grand Mohair 2600 / Wood: Smoked oak.

**Swoon Chair.** Space Copenhagen, 2016. Fabric: Grand Mohair 2600 / Wood: Smoked oak.

**6286 Table.** Børge Mogensen, 1964. Wood: Smoked oak.

**Din Chair.** Oeo Studio, 2018.

Leather: Nubuck Velvet 501 Light sand / Wood: Smoked oak.

Fabric: Maple 222 / Wood: Smoked oak.





**6284 Table.** Børge Mogensen, 1958. Wood: Smoked oak.

**Trinidad Chair.** Nanna Ditzel, 1993. Leather, seat upholstered: Premium 77 Warm Grey.  
Shell: Light grey oak stained / Frame: Flint.





**Pon Table.** Jasper Morrison, 2015. Wood: Oak oiled.  
**Spoke-back Sofa.** Børge Mogensen, 1945. Fabric: Recheck 775 / Wood: Oak oiled.

**Yksi Chair.** Thau & Kallio, 2018.  
Leather, seat upholstered: Premium 88 Black /  
Wood: Oak black lacquered.





**Mesa Table.** Welling/Ludvik, 2013. Table top: Nano laminate White / Frame: White.

**Yksi Chair.** Thu & Kallio, 2018.

Fabric, seat upholstered: Canvas 114 / Wood: Oak oiled.  
Wood: Oak oiled.



*“Mogensen’s designs  
are intentionally discrete.  
He didn’t set out to design  
anything eye-catching or  
iconic, and yet his designs  
are often quite radical.  
I believe that’s the clue  
to understanding and  
appreciating the quality  
of his design.”*


JASPER MORRISON

**Taro Table.** Jasper Morrison, 2016. Wood: Smoked oak.

**J39 Chair.** Børge Mogensen, 1947. Seat: Black paper cord / Wood: Black lacquered.







**The Hunting Chair.** Børge Mogensen, 1950.  
Leather: Saddle leather Natural / Wood: Oak soap.  
**Haiku Low Sofa.** Gamfratesi, 2015. Fabric: Maple 722.  
**Pon Table.** Jasper Morrison, 2015. Wood: Oak soap.

**J16 Rocking Chair + J16 Stool.** Hans J. Wegner, 1944.  
Natural paper cord / Wood: Oak oiled.





**Pato Stool.** Welling/Ludvik, 2016. Fabric, fully upholstered: Pilot 162 by Raf Simons / Frame: Black.



**Pon Table.** Jasper Morrison, 2015. Wood: Smoked oak.  
**1788 Chair.** Hans J. Wegner, 1963. Fabric: Savanna 622 / Wood: Smoked oak.



**Taro Table.** Jasper Morrison, 2018. Wood: Smoked oak.

**Søborg Steel Base Chair.** Børge Mogensen, 1952.

Fabric, fully upholstered: Harald 3 283 / Wood: Oak black lacquered / Frame: Black.

Fabric, fully upholstered: Balder 3 192 / Wood: Oak black lacquered / Frame: Black.







**Eve Chair.** Timo Ripatti, 2018. Leather: Aniline Nature 95 Cognac /  
Wood: Oak lacquered.

**No.1 Sofa.** Børge Mogensen, 1955. Fabric: Maple 212 / Wood: Oak soap.

**Pon Table.** Jasper Morrison, 2015. Wood: Oak soap.



**Piloti Table.** Hugo Passos, 2016. Wood: Oak black lacquered.

**Pon Table.** Jasper Morrison, 2015. Wood: Oak soap.

**2204 Wing Chair.** Børge Mogensen, 1963. Leather: Nubuck Velvet 506 Black / Wood: Oak soap.



**Mesa Table.** Welling/Ludvik, 2013. Table top: Linoleum Black / Frame: Black.  
**Søborg Wood Base Chair.** Børge Mogensen, 1950.  
Leather, fully upholstered: Premium 86 Dark Brown / Wood: Smoked oak stained.  
Wood: Smoked oak stained.





**Swoon Chair.** Space Copenhagen, 2016. Fabric: Maple 212 / Wood: Smoked oak.

**Swoon Ottoman.** Space Copenhagen, 2018. Fabric: Maple 212 / Wood: Smoked oak.

**Piloti Table.** Hugo Passos, 2016. Wood: Smoked oak.





*“We are obsessed with  
the material part. It is  
a passion for us to create  
something that embodies  
a slow pace.”*

SPACE COPENHAGEN



**Mesa Table.** Welling/Ludvik, 2013. Table top: Nano laminate White / Frame: White.  
**Verve Swivel Chair.** Geckeler Michels, 2016. Fabric, fully upholstered: Steelcut Trio 3 466 / Frame: White.

Spine Stool. Space Copenhagen, 2014. Leather: Nubuck Velvet 502 Warm Grey / Wood: Oak lacquered.





**Eve Chair.** Timo Ripatti, 2018. Leather: Premium 88 Black / Wood: Oak black lacquered.  
**2335 Sofa.** Børge Mogensen Studio, 1975. Fabric: Harald 3 792 / Wood: Oak black lacquered.  
**Piloti Table.** Hugo Passos, 2016. Wood: Oak black lacquered.





**Spine Barstool.** Space Copenhagen, 2011. Leather: Premium 88 Black / Wood: Smoked oak stained.

**Mesa Table.** Welling/Ludvik, 2013. Table top: Nano laminate White / Frame: White.

**3171 Bench.** Børge Mogensen, 1956. Leather: Vegetal Nature 90 Natural / Wood: Oak lacquered.

**J39 Chair.** Børge Mogensen, 1947. Seat: Natural paper cord / Wood: Oak lacquered.



**Gallery Stool.** Hans Sandgren Jakobsen, 1998. Wood: Ash black lacquered.

**No.1 Sofa.** Børge Mogensen, 1955. Fabric: Velours Soleil, Bleu de Prusse / Wood: Smoked oak.

**Barbry Table.** Aurélien Barbry, 2017. Table top: Smoked oak / Frame: Black.

**The Hunting Chair.** Børge Mogensen, 1950. Leather: Saddle leather Black / Wood: Smoked oak.









**2207 Chair.** Børge Mogensen, 1963. Fabric: Harald 3 283 / Wood: Smoked oak.

**Barbry Table.** Aurélien Barbry, 2017. Table top: Smoked oak / Frame: Black.

**C18 Table.** Børge Mogensen, 1947. Wood: Smoked oak.

**Spine Chair.** Space Copenhagen, 2011. Leather: Premium 88 Black / Wood: Black lacquered.





**Taro Table.** Jasper Morrison, 2016. Wood: Oak soap.

**Trinidad Chair.** Nanna Ditzel, 1993. Shell: Smoked oak stained / Frame: Flint.

*“On Trinidad, I fell  
in love with the elaborate  
fretwork of the colonial  
facades, which almost  
dissolve in light and  
shadow – and this lace-like  
lightness I wanted to  
interpret into a chair.”*

NANNA DITZEL



**Swoon Chair.** Space Copenhagen, 2016. Fabric: Ria 141 by Raf Simons / Wood: Smoked oak.  
**Pon Table.** Jasper Morrison, 2015. Wood: Smoked oak.





**2207 Chair.** Børge Mogensen, 1962. Nubuck Velvet: 503 Clay / Wood: Oak soap.  
**Pon Table.** Jasper Morrison, 2015. Wood: Oak soap.



**Spine Daybed.** Space Copenhagen, 2011.  
Nubuck Velvet: 501 Light sand / Wood: Smoked oak stained.







**The Spanish Chair.** Børge Mogensen, 1958.

Leather: Saddle leather Cognac / Wood: Oak oiled.

**Kile Sofa.** Jasper Morrison, 2016.

Fabric: Savanna 122 / Wood: Oak oiled.

**Piloti Table.** Hugo Passos, 2016. Wood: Oak oiled.



**Taro Table.** Jasper Morrison, 2016. Wood: Oak oiled.

**J16 Stool.** Hans J. Wegner, 1944. Natural paper cord / Wood: Oiled oak.

**Acme A-base Armchair.** Geckeler Michels, 2016. Shell, polypropylene: White / Frame: White.

**Pato 4-leg Chair.** Welling/Ludvik, 2013. Shell, polypropylene: Ocean / Frame: Ocean

**Søborg Wood Base Chair.** Børge Mogensen, 1950. Wood: Oak oiled.

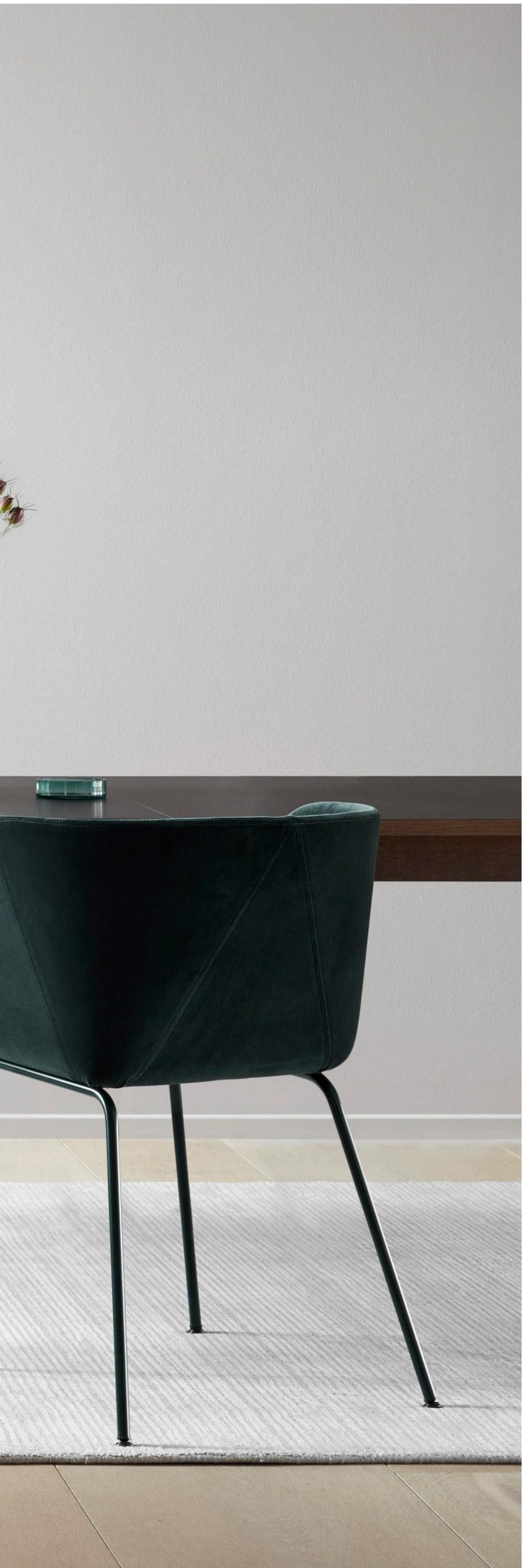


**Piloti Table.** Hugo Passos, 2016. Wood: Oak oiled.

**Ana Table.** Arde, 2017. Table top: Nano laminate Black / Wood: Smoked oak oiled stained.

**Verve Chair.** Geckeler Michels, 2016. Fabric, fully upholstered: Harald 3 992 / Frame: Ancient Green.





**Haugesen Table.** Niels Jørgen Haugesen, 1986.  
Table top: Linoleum Black / Frame: Chrome.  
**Pato Executive Armchair.** Welling/Ludvik, 2013.  
Leather, fully upholstered: Soft 37 Grey / Frame: Chrome.  
**Gallery Stool.** Hans Sandgren Jakobsen, 1998.  
Wood: Ash black lacquered.







**Barbry Table.** Aurélien Barbry, 2017. Table top: Smoked oak / Frame: Black.

**The Spanish Chair.** Børge Mogensen, 1958. Leather: Saddle leather Black / Wood: Smoked oak.

**6284 Table.** Børge Mogensen, 1958. Wood: Oak lacquered.

**Pato Veneer Wood Base Chair.** Welling/Ludvik, 2016. Shell: Oak lacquered / Wood: Oak lacquered.

**Pato Wood Base Chair.** Welling/Ludvik, 2016. Leather, fully upholstered: Soft 35 Cognac / Wood: Oak lacquered.





**Stingray Rocking Chair.** Thomas Pedersen, 2002. Shell: Matt White / Frame: Flint / Neck Cushion: Leather, Soft 33 Clay.  
**Piloti Table.** Hugo Passos, 2016. Wood: Oak soap.



**Pato Lounge Wood Base Chair.** Welling/Ludvik, 2016. Fabric: Colline 788 / Wood: Smoked oak.

**Haiku Sofa.** Gamfratesi, 2015. Fabric: Harald 3 792 / Sonar 1 773 / Legs: Black.  
**Barbry Table.** Aurélien Barbry, 2017. Table top: Smoked oak / Frame: Black.



**Mogensen Studio Table.** Børge Mogensen, 1953. Table top: Oak lacquered / Frame: Black.

**Yksi Chair.** Thu & Kallio, 2018. Wood: Oak black lacquered.

**The Hunting Chair.** Børge Mogensen, 1950. Leather: Saddle leather Black / Wood: Smoked oak.





**Swoon Ottoman.** Space Copenhagen, 2018. Fabric: Grand Mohair 2600 / Wood: Smoked oak.  
Fabric: Harald 3 242 / Wood: Smoked oak. Fabric: Maple 212 / Wood: Smoked oak.

# THE CAT



# A LOGUE

## ARDE



**Ana Table — Model 6490**  
L: 220/320 cm, W: 95 cm  
H: 73 cm, Wt: 72 kg



## AURÉLIEN BARBRY



**Barbry Table — Model 3860**  
Ø: 57 cm, H: 51.5 cm  
Wt: 6.7 kg



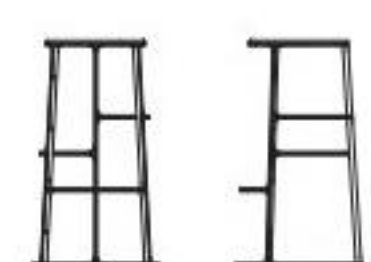
**Barbry Table — Model 3861**  
Ø: 57 cm, H: 40.5 cm  
Wt: 6.4 kg



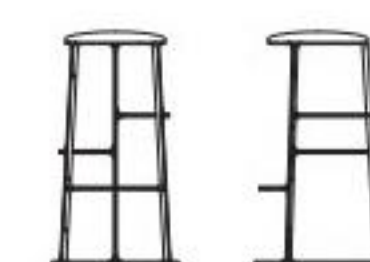
**Barbry Table — Model 3862**  
Ø: 57 cm, H: 28.5 cm  
Wt: 5.8 kg



**Barbry Stool — Model 3800**  
Ø: 42 cm, H: 76 cm  
Wt: 7 kg



**Barbry Stool — Model 3801**  
Seat upholstered  
Ø: 42 cm, H: 77 cm  
Wt: 7.25 kg

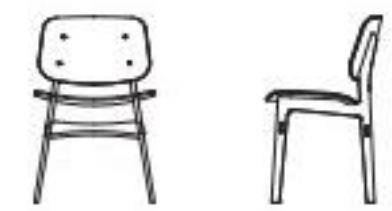


# BØRGE MOGENSEN



**Søborg Wood Base — Model 3050**

W: 51 cm, D: 48.5 cm  
H: 80 cm, Sh: 45.5 cm  
Wt: 5 kg



**Søborg Wood Base — Model 3051**

Seat upholstered  
W: 51 cm, D: 48.5 cm  
H: 80 cm, Sh: 46.5 cm  
Wt: 5.5 kg



**Søborg Wood Base — Model 3052**

Seat and back upholstered  
W: 51 cm, D: 48.5 cm  
H: 80 cm, Sh: 46.5 cm  
Wt: 5.5 kg



**Søborg Steel Base — Model 3060**

W: 51 cm, D: 50.5 cm  
H: 79.5 cm, Sh: 45.5 cm  
Wt: 6 kg



**Søborg Steel Base — Model 3061**

Seat upholstered  
W: 51 cm, D: 50.5 cm  
H: 79.5 cm, Sh: 46.5 cm  
Wt: 6.5 kg



**Søborg Steel Base — Model 3062**

Seat and back upholstered  
W: 51 cm, D: 50.5 cm  
H: 79.5 cm, Sh: 46.5 cm  
Wt: 6.5 kg



**Søborg Steel Base Armchair — Model 3070**

W: 62 cm, D: 50.5 cm  
H: 78 cm, Sh: 45 cm  
Wt: 6 kg



**Søborg Steel Base Armchair — Model 3071**

Seat upholstered  
W: 62 cm, D: 50.5 cm  
H: 78 cm, Sh: 46.5 cm  
Wt: 6 kg



**Søborg Steel Base Armchair — Model 3072**

Seat and back upholstered  
W: 62 cm, D: 50.5 cm  
H: 78 cm, Sh: 46.5 cm  
Wt: 6.5 kg



BØRGE MOGENSEN



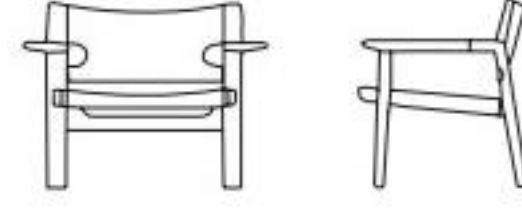
**Mogensen Studio Table — Model 3030**

L: 180 cm, W: 90 cm  
H: 73 cm, Wt: 48 kg



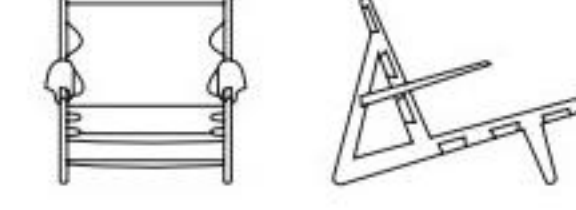
**The Spanish Chair — Model 2226**

W: 82.5 cm, D: 60 cm  
H: 67 cm, Sh: 33 cm  
Wt: 12 kg



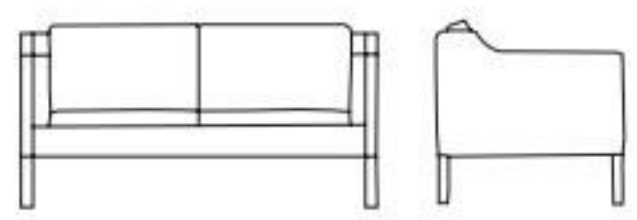
**The Hunting Chair — Model 2229**

W: 70.5 cm, D: 87 cm  
H: 67 cm, Sh: 28 cm  
Wt: 9 kg



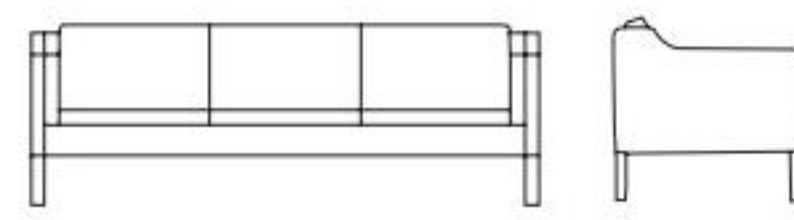
**Mogensen 2212 Sofa — Model 2212**

L: 158 cm, D: 81 cm  
H: 80 cm, Sh: 43 cm  
Wt: 53 kg



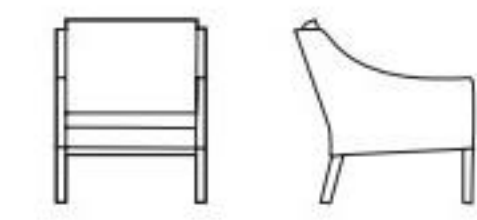
**Mogensen 2213 Sofa — Model 2213**

L: 221 cm, D: 81 cm  
H: 80 cm, Sh: 43 cm  
Wt: 73 kg



**Mogensen 2207 Chair — Model 2207**

W: 69.5 cm, D: 82 cm  
H: 84 cm, Sh: 43 cm  
Wt: 24 kg



**Mogensen Wing Chair — Model 2204**

W: 69 cm, D: 88 cm, H: 106 cm  
Sh: 43 cm, Wt: 29 kg



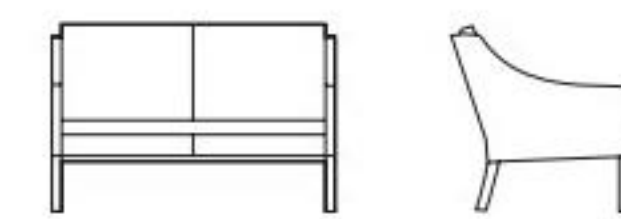
**Mogensen 2202 Ottoman — Model 2202**

W: 58 cm, D: 58 cm  
H: 43 cm, Wt: 9 kg



**Mogensen 2208 Sofa — Model 2208**

L: 128 cm, D: 82 cm  
H: 84 cm, Sh: 43 cm  
Wt: 37 kg

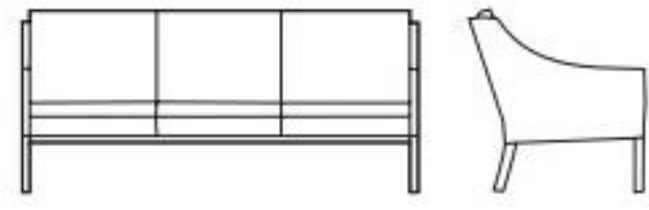


BØRGE MOGENSEN



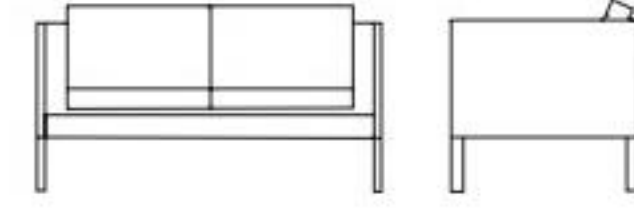
**Mogensen 2209 Sofa — Model 2209**

L: 186 cm, D: 82 cm  
H: 84 cm, Sh: 43 cm  
Wt: 45 kg



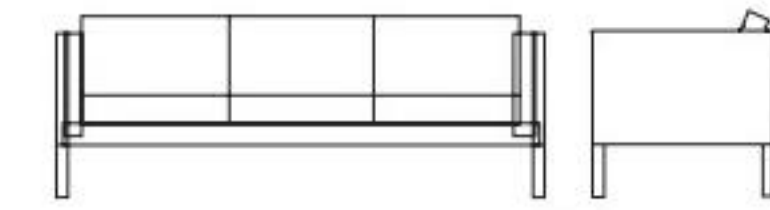
**Mogensen 2332 Sofa — Model 2332**

L: 148 cm, D: 78 cm  
H: 78 cm, Sh: 43 cm  
Wt: 48 kg



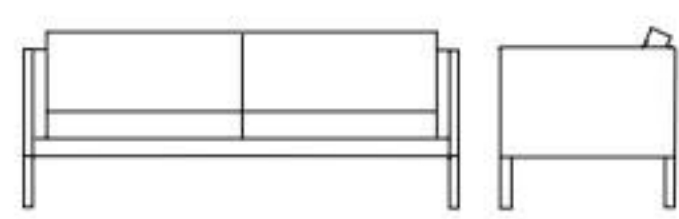
**Mogensen 2333 Sofa — Model 2333**

L: 207 cm, D: 78 cm  
H: 78 cm, Sh: 43 cm  
Wt: 68 kg



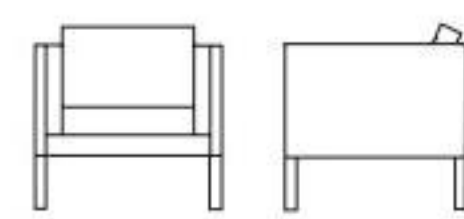
**Mogensen 2335 Sofa — Model 2335**

L: 180 cm, D: 78 cm  
H: 78 cm, Sh: 43 cm  
Wt: 60 kg



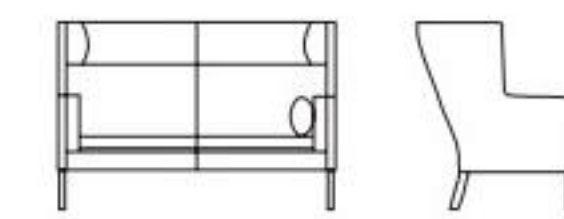
**Mogensen 2334 Chair — Model 2334**

W: 85 cm, D: 78 cm  
H: 78 cm, Sh: 43 cm  
Wt: 34 kg



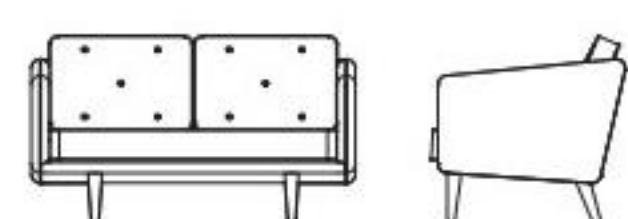
**The Coupé Sofa — Model 2292**

L: 154 cm, D: 89 cm  
H: 106 cm, Sh: 42 cm  
Wt: 65 kg



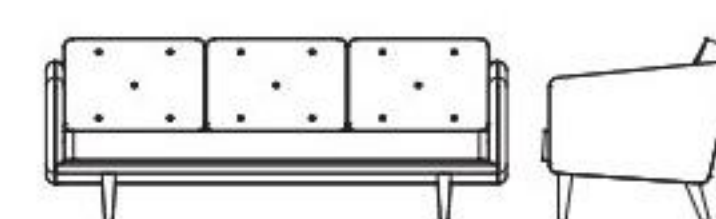
**No. 1 Sofa — Model 2002**

L: 143 cm, D: 86 cm  
H: 83 cm, Sh: 42 cm  
Wt: 42 kg



**No. 1 Sofa — Model 2003**

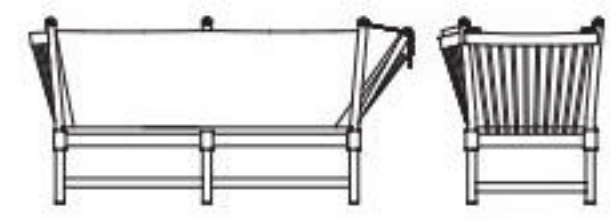
L: 206 cm, D: 86 cm  
H: 83 cm, Sh: 42 cm  
Wt: 54 kg



BØRGE MOGENSEN



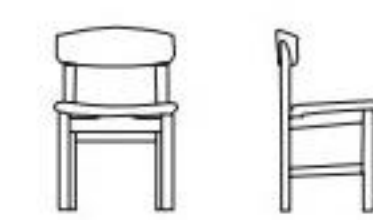
**The Spoke-back Sofa — Model 1789**  
L: 160/197 cm, D: 76.5 cm  
H: 86 cm, Sh: 40 cm  
Wt: 33 kg



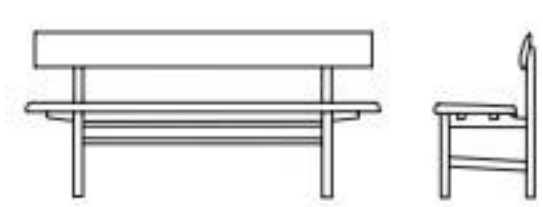
**Mogensen J39 Chair — Model 3239**  
W: 48 cm, D: 43 cm,  
H: 77 cm Sh: 46 cm  
Wt: 4.5 kg



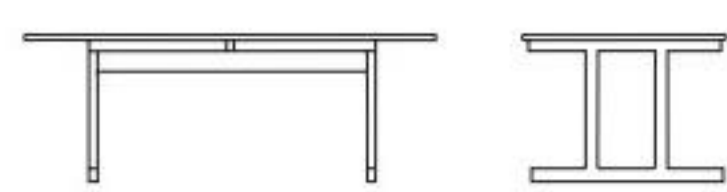
**3236 Chair — Model 3236**  
W: 53 cm, D: 46.5 cm,  
H: 75 cm, Sh: 46 cm  
Wt: 6 kg



**Mogensen Bench — Model 3171**  
L: 171.5 cm, W: 48.5 cm  
H: 77 cm, Sh: 46 cm  
Wt: 21 kg



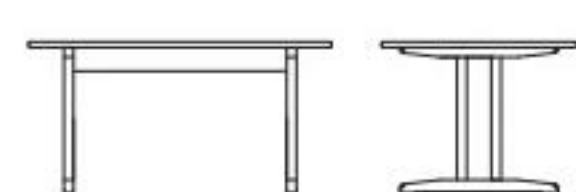
**The Shaker Table — Model 6286**  
L: 195 cm, W: 97.5 cm  
H: 71 cm, Wt: 56 kg



**6284 Table — Model 6284**  
L: 180 cm, W: 90 cm  
H: 72.5 cm Wt: 40 kg



**C18 Table — Model 6291**  
L: 140 cm, W: 90 cm  
H: 71 cm, Wt: 30 kg



**C18 Table — Model 6290**  
L: 180 cm, W: 90 cm  
H: 71 cm, Wt: 35 kg



## CECILIE MANZ



**Micado Table — Model 1213**

Ø: 60 cm, H: 49 cm

Wt: 3.8 kg



## EJVIND A. JOHANSSON



**J63 Stool — Model 3063**

W: 48 cm, D: 34.5 cm

H: 47 cm, Wt: 4 kg



**J64 Chair — Model 3064**

W: 59.5 cm, D: 54 cm

H: 79.5 cm, Sh: 45 cm

Wt: 5.8 kg



## GAMFRATESI



**Haiku Sofa — Model 1632**

L: 156 cm, D: 88 cm

H: 104 cm, Sh: 44.5 cm

Wt: 56 kg



**Haiku Sofa — Model 1633**

L: 228 cm, D: 88 cm

H: 104 cm, Sh: 44.5 cm

Wt: 81 kg



## GAMFRATESI



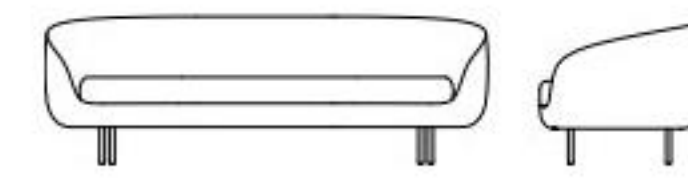
**Haiku Low Sofa — Model 1642**

L: 156 cm, D: 88 cm  
H: 76.5 cm, Sh: 44.5 cm  
Wt: 41 kg



**Haiku Low Sofa — Model 1643**

L: 228 cm, D: 88 cm  
H: 76.5 cm, Sh: 44.5 cm  
Wt: 50 kg



## GECKELER MICHELS



**Acme Sledge — Model 3600**

Polypropylene  
W: 51 cm, D: 49 cm  
H: 80.5 cm, Sh: 46 cm  
Wt: 6 kg



**Acme Sledge — Model 3601**

Polypropylene seat upholstered  
W: 51 cm, D: 49 cm  
H: 80.5 cm, Sh: 47 cm  
Wt: 6.4 kg



**Acme Sledge Armchair — Model 3610**

Polypropylene  
W: 54 cm, D: 49 cm  
H: 80.5 cm, Sh: 46 cm  
Wt: 6.7 kg



**Acme Sledge Armchair — Model 3611**

Polypropylene seat upholstered  
W: 54 cm, D: 49 cm  
H: 80.5 cm, Sh: 47 cm  
Wt: 7 kg





# GECKELER MICHELS



**Acme A-Base — Model 3620**

Polypropylene  
W: 50.5 cm, D: 50 cm  
H: 80 cm, Sh: 46.5 cm  
Wt: 5.7 kg



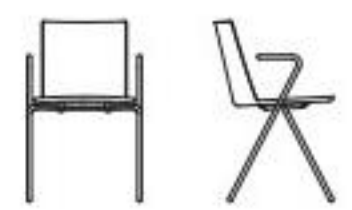
**Acme A-Base — Model 3621**  
Polypropylene seat upholstered

W: 50.5 cm, D: 50 cm  
H: 80 cm, Sh: 47.5 cm  
Wt: 6.1 kg



**Acme A-Base Armchair — Model 3630**

Polypropylene  
W: 50.5 cm, D: 50 cm  
H: 80 cm, Sh: 46.5 cm  
Wt: 6.3 kg



**Acme A-Base Armchair — Model 3631**

Polypropylene seat upholstered  
W: 50.5 cm, D: 50 cm  
H: 80 cm, Sh: 47.5 cm  
Wt: 6.7 kg



**Verve Sledge — Model 3700**

Polypropylene  
W: 57.5 cm, D: 58 cm  
H: 72.5 cm, Sh: 45 cm  
Wt: 8.3 kg



**Verve Sledge — Model 3701**

Polypropylene seat upholstered  
W: 57.5 cm, D: 58 cm  
H: 72.5 cm, Sh: 49 cm  
Wt: 9 kg



**Verve Sledge — Model 3702**

Fully upholstered  
W: 58.5 cm, D: 59.5 cm  
H: 74.5 cm, Sh: 49 cm  
Wt: 10.6 kg



GECKELER MICHELS



**Verve 4 Leg — Model 3740**  
Polypropylene  
W: 57.5 cm, D: 58 cm  
H: 74.5 cm, Sh: 45 cm



**Verve 4 Leg — Model 3741**  
Polypropylene seat upholstered  
W: 57.5 cm, D: 58 cm  
H: 74.5 cm, Sh: 49 cm



**Verve 4 Leg — Model 3742**  
Fully upholstered  
W: 58.5 cm, D: 59.5 cm  
H: 76.5 cm, Sh: 49 cm



**Verve Swivel — Model 3730**  
Polypropylene  
W: 57.5 cm, D: 57.5 cm  
H: 74.5 cm, Sh: 46.5 cm  
Wt: 9.6 kg



**Verve Swivel — Model 3731**  
Polypropylene seat upholstered  
W: 57.5 cm, D: 58 cm  
H: 74.5 cm, Sh: 50.5 cm  
Wt: 10.3 kg



**Verve Swivel — Model 3732**  
Fully upholstered  
W: 58.5 cm, D: 58.5 cm  
H: 75.5 cm, Sh: 50.5 cm  
Wt: 11.8 kg



**Verve Swivel Casters — Model 3720**  
Polypropylene  
W: 57.5 cm, D: 57.5 cm  
H: 75.5 cm, Sh: 46 cm  
Wt: 9.8 kg



**Verve Swivel Casters — Model 3721**  
Polypropylene seat upholstered  
W: 57.5 cm, D: 57.5 cm  
H: 75.5 cm, Sh: 49.5 cm  
Wt: 10.5 kg



**Verve Swivel Casters — Model 3722**  
Fully upholstered  
W: 58.5 cm, D: 58.5 cm  
H: 76.5 cm, Sh: 49.5 cm  
Wt: 12 kg



## HANS J. WEGNER



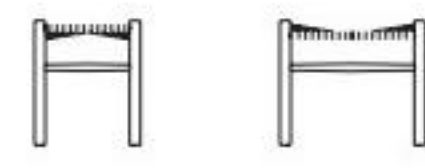
**Wegner J16 Rocking Chair — Model 16000**

W: 63 cm, D: 93 cm  
H: 107 cm, Sh: 42 cm  
Wt: 11 kg



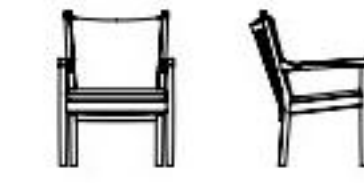
**Wegner J16 Stool — Model 16002**

W: 52 cm, D: 40 cm  
H: 45 cm, Wt: 4 kg



**Wegner 1788 Chair — Model 178810**

W: 65.5 cm, D: 70 cm  
H: 88 cm, Sh: 43.5 cm  
Wt: 10 kg

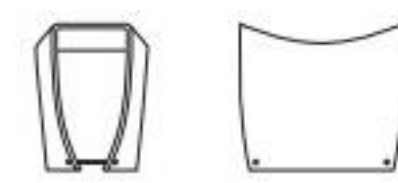


## HANS SANDGREN JAKOBSEN



**Gallery Stool — Model 1610**

W: 52 Cm, D: 36 cm  
H: 48 cm, Wt: 4 kg



## HUGO PASSOS



**Piloti Table — Model 6700**

L: 39 cm, W: 31 cm  
H: 35/41 cm, Wt: 2.3 kg



**Piloti Table — Model 6705**

L: 46.5 cm, W: 39 cm  
H: 35/41 cm, Wt: 2.8 kg



**Piloti Table — Model 6710**

L: 75 cm, W: 31 cm  
H: 35/41 cm, Wt: 3.1 kg



## HUGO PASSOS



**Piloti Table — Model 6715**  
L: 39 cm, W: 120 cm  
H: 35 cm, Wt: 6.3 kg



**Piloti Table — Model 6720**  
L: 75 cm, W: 75 cm  
H: 35/41 cm, Wt: 10 kg



**Piloti Table — Model 6725**  
L: 63 cm, W: 63 cm  
H: 35/41 cm, Wt: 7.5 kg



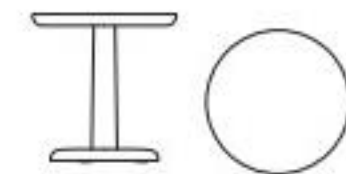
## JASPER MORRISON



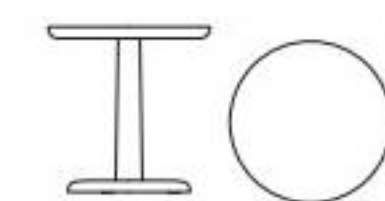
**Pon Table — Model 1280**  
Ø: 35 cm, H: 36 cm,  
Wt: 5 kg



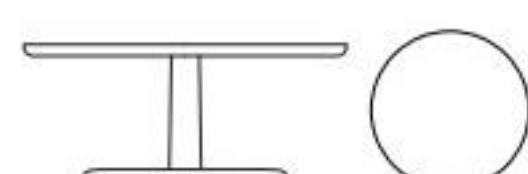
**Pon Table — Model 1285**  
Ø: 40 cm, H: 41 cm  
Wt: 5.5 kg



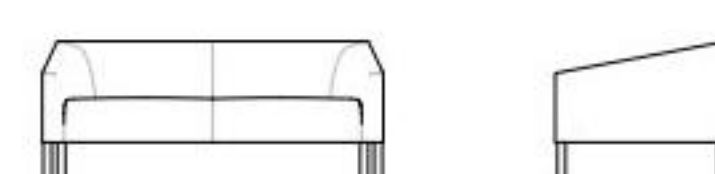
**Pon Table — Model 1290**  
Ø: 45 cm, H: 46 cm  
Wt: 7 kg



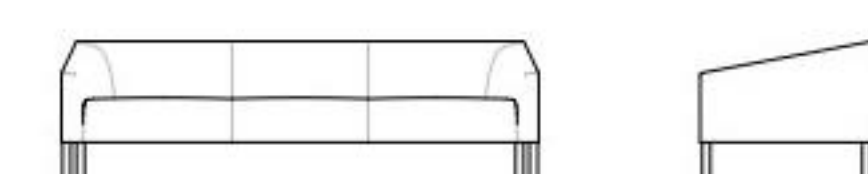
**Pon Table — Model 1295**  
Ø: 90 cm, H: 38 cm  
Wt: 28.5 kg



**Kile Sofa — Model 2702**  
L: 162 cm, D: 83 cm  
H: 70 cm, Sh: 42 cm  
Wt: 48 kg



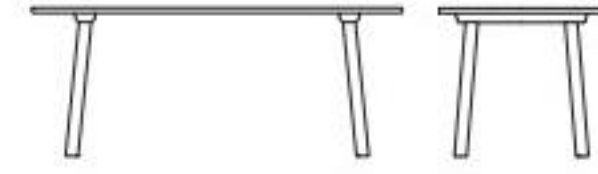
**Kile Sofa — Model 2703**  
L: 225 cm, D: 83 cm  
H: 70 cm, Sh: 42 cm  
Wt: 63 kg



JASPER MORRISON



**Taro Table — Model 6100/6101**  
Milled grooves / plain top  
L: 180 cm, W: 80 cm  
H: 73 cm, Wt: 33 kg



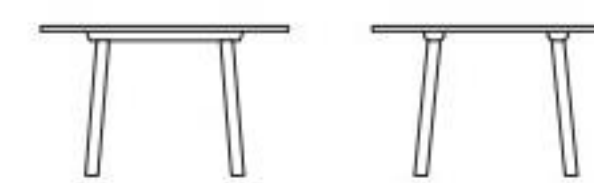
**Taro Table — Model 6105/6106**  
Milled grooves / plain top  
L: 220 cm, W: 93.5 cm  
H: 73 cm, Wt: 47 kg



**Taro Table — Model 6110/6111**  
Milled grooves / plain top  
L: 280 cm, W: 93.5 cm  
H: 73 cm, Wt: 65 kg



**Taro Table — Model 6120/6121**  
Milled grooves / plain top  
Ø: 120 cm, H: 73 cm  
Wt: 41.5 kg



**Taro Table — Model 6130/6131**  
Milled grooves / plain top  
Ø: 130 cm, H: 73 cm  
Wt: 46.5 kg



# NANNA DITZEL



**Trinidad Chair — Model 3398**

W: 48.5 cm, D: 57 cm  
H: 85 cm, Sh: 45.5 cm  
Wt: 4 kg



**Trinidad Chair — Model 3396**

Seat upholstered  
W: 48.5 cm, D: 57 cm  
H: 85 cm, Sh: 46.5 cm  
Wt: 4 kg



**Trinidad Armchair — Model 3399**

W: 61 cm, D: 57 cm  
H: 85 cm, Sh: 45.5 cm  
Wt: 5 kg



**Trinidad Armchair — Model 3397**

Seat upholstered  
W: 61 cm, D: 57 cm  
H: 85 cm, Sh: 46.5 cm  
Wt: 5 kg



**Trinidad Stool — Model 3400**

W: 45 cm, D: 50 cm  
H: 112.5 cm, Sh: 67/77 cm  
Wt: 5 kg

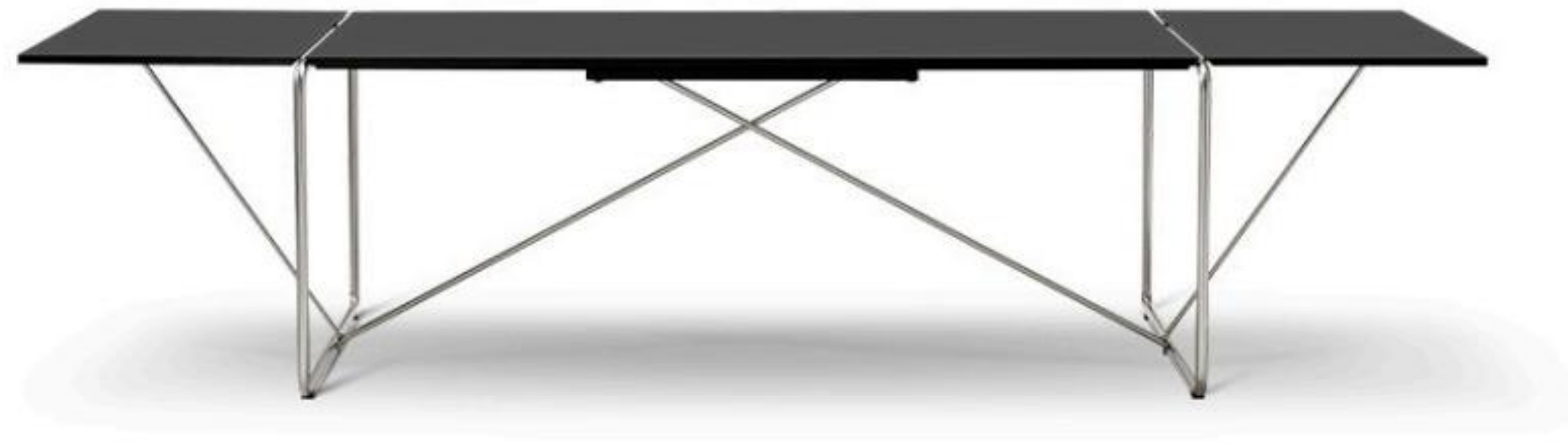


**Trinidad Stool — Model 3401**

Seat upholstered  
W: 45 cm, D: 50 cm  
H: 112.5 cm, Sh: 68/78 cm  
Wt: 5.5 kg



## NIELS JØRGEN HAUGESEN



**The Haugesen Table — Model 4750**

L: 186/305 cm, W: 92 cm

H: 72 cm, Wt: 52 kg



## PER BORRE



**Astral Bench — Model 1111**

L: ½ Ø 450 cm, D: 225 cm

H: 81 cm, Sh: 42 Cm

Wt: 141 kg



## SHIN AZUMI



**Nara Coat Stand — Model 1880**

H: 180 cm, W: 32 cm

D: 42 cm, Wt: 10 kg



## OEO



### Din Chair — Model 3320

W: 58.8 cm, D: 55 cm

H: 77.5 cm, Sh: 46 cm

Wt: 12.5 kg



## SPACE COPENHAGEN

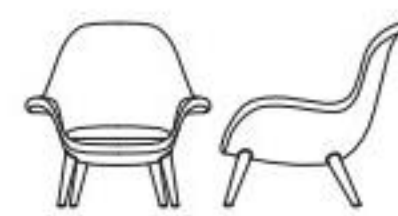


### Swoon Chair — Model 1770

W: 90 cm, D: 88.5 cm

H: 83.5 cm, Sh: 41.5 cm

Wt: 10 kg



### Swoon Ottoman — Model 1771

W: 63 cm, D: 52.5 cm

H: 40.5 cm, Wt: 9.5 kg



### Spine Daybed — Model 1700

L: 190 cm, W: 85 cm

H: 45 cm, Sh: 35 cm

Wt: 43.5 kg





SPACE COPENHAGEN



**Spine Chair — Model 1721**  
 W: 46.5 cm, D: 58 cm  
 H: 76 cm, Sh: 46.5 cm  
 Wt: 8 kg



**Spine Barstool — Model 1731**  
 W: 45 cm, D: 51 cm  
 H: 98/104 cm, Sh: 68/74 cm  
 Wt: 10.2 kg



**Spine Stool — Model 1736**  
 W: 42.5 cm, D: 35 cm  
 H: 68/74 cm, Wt: 5.7 kg



**Spine Lounge Petit — Model 1711**  
 W: 65 cm, D: 70 cm  
 H: 69 cm, Sh: 41 cm  
 Wt: 17.5 kg



**Spine Lounge Chair — Model 1710**  
 W: 80 cm, D: 81 cm  
 H: 71 cm, Sh: 41 cm  
 Wt: 26 kg



**Spine Lounge Sofa — Model 1712**  
 L: 160 cm, D: 81 cm  
 H: 71 cm, Sh: 41 cm  
 Wt: 51 kg



SUSANNE GRØNLUND



**Easy Table — Model 1362**  
 L: 125 cm, W: 60 cm  
 H: 72.5 cm, Wt: 24 kg



**Easy Table — Model 1374**  
 L: 140 cm, W: 70 cm  
 H: 72.5 cm, Wt: 29 kg



**Easy Table — Model 1380**  
 L: 195 cm, W: 80 cm  
 H: 72.5 cm, Wt: 37 kg



## SUSANNE GRØNLUND



**Easy Table — Model 1383**  
L: 125 cm, W: 80 cm  
H: 72.5 cm, Wt: 27 kg



**Easy Table — Model 1384**  
L: 140 cm, W: 80 cm  
H: 72.5 cm, Wt: 30 kg



**Easy Table — Model 1386**  
L: 160 cm, W: 80 cm  
H: 72.5 cm, Wt: 32 kg



**Easy Table — Model 1388**  
L: 180 cm, W: 80 cm  
H: 72.5 cm, Wt: 35 kg



**Easy Table — Model 1389**  
L: 190 cm, W: 80 cm  
H: 72.5 cm, Wt: 36.5 kg



**Easy Table — Model 1390**  
L: 180 cm, W: 90 cm  
H: 72.5 cm, Wt: 36.5 kg



## THAU & KALLIO



**Yksi Chair — Model 3340**  
W: 54.5 cm, D: 49 cm  
H: 76 cm, Sh: 46 cm  
Wt: 5.1 kg



**Yksi Chair — Model 3341**  
Seat upholstered  
W: 54.5 cm, D: 50 cm  
H: 76 cm, Sh: 47 cm  
Wt: 5.3 kg



TIMO RIPATTI



**Eve Chair — Model 2591**  
 W: 66.3 cm, D: 69.5 cm  
 H: 70.8 cm, Sh: 41 cm  
 Wt: 4.8 kg



**Eve Chair — Model 2592**  
 Seat upholstered  
 W: 66.3 cm, D: 69.5 cm  
 H: 70.8 cm, Sh: 41.5 cm  
 Wt: 5.2 kg



THOMAS PEDERSEN



**Stingray Rocking Chair — Model 3500**  
 W: 120 cm, D: 114 cm  
 H: 83.5 cm, Sh: 34 cm  
 Wt: 17 kg



**Icicle Table — Model 1220**  
 Ø: 50 cm, H: 43/54 cm  
 Wt: 3.4 kg



**Icicle Table — Model 1230**  
 L: 84 cm, W: 63 cm  
 H: 43/54 cm, Wt: 5.7 kg



**Icicle Table — Model 1240**  
 L: 127 cm, W: 90 cm  
 H: 35/43/49 cm, Wt: 14 kg



# WELLING/LUDVIK



**Pato Trolley — Model 1006**  
Black  
W: 97 cm, D: 60 cm  
H: 106 cm, Wt: 18 kg,



**Pato Multi Trolley — Model 1008**  
Silver  
W: 47.5 cm, D: 38 cm  
H: 115 cm, Wt: 6 kg,



**Pato Swivel — Model 4000**  
Polypropylene  
W: 63 cm, D: 50 cm  
H: 79 cm, Sh: 45.5 cm  
Wt: 8.4 kg



**Pato Swivel — Model 4001**  
Polypropylene, seat upholstered  
W: 63 cm, D: 50 cm  
H: 79 cm, Sh: 46.5 cm  
Wt: 8.6 kg



**Pato Swivel — Model 4002**  
Fully upholstered  
W: 63 cm, D: 50 cm  
H: 79.5 cm, Sh: 46.5 cm  
Wt: 8.9 kg



**Pato Veneer Swivel — Model 4003**  
Veneer  
W: 63 cm, D: 50 cm  
H: 79 cm, Sh: 45.5 cm  
Wt: 8.4 kg



**Pato Veneer Swivel — Model 4004**  
Veneer, seat upholstered  
W: 63 cm, D: 50 cm  
H: 79 cm, Sh: 46.5 cm  
Wt: 8.6 kg



WELLING/LUDVIK



**Pato Swivel Armchair — Model 4010**  
 Polypropylene  
 W: 63 cm, D: 50 cm  
 H: 79 cm, Sh: 45.5 cm  
 Wt: 10 kg



**Pato Swivel Armchair — Model 4011**  
 Polypropylene, seat upholstered  
 W: 63 cm, D: 50 cm  
 H: 79 cm, Sh: 46.5 cm  
 Wt: 10.2 kg



**Pato Swivel Armchair — Model 4012**  
 Fully upholstered  
 W: 63 cm, D: 50 cm  
 H: 79.5 cm, Sh: 46.5 cm  
 Wt: 10.6 kg



**Pato Veneer Swivel Armchair — Model 4013**  
 Veneer  
 W: 63 cm, D: 50 cm  
 H: 79 cm, Sh: 45.5 cm  
 Wt: 10 kg



**Pato Veneer Swivel Armchair — Model 4014**  
 Veneer, seat upholstered  
 W: 63 cm, D: 50 cm  
 H: 79 cm, Sh: 46.5 cm  
 Wt: 10.2 kg



**Pato Office — Model 4020**  
 Polypropylene  
 W: 68.5 cm, D: 62 cm  
 H: 78-88 cm, Sh: 43.5-53.5 cm  
 Wt: 9.7 kg



**Pato Office — Model 4021**  
 Polypropylene, seat upholstered  
 W: 68.5 cm, D: 62 cm  
 H: 78-88 cm, Sh: 44.5-54.5 cm  
 Wt: 10 kg



**Pato Office — Model 4022**  
 Fully upholstered  
 W: 68.5 cm, D: 62 cm  
 H: 78-88 cm, Sh: 44.5-54.5 cm  
 Wt: 10.3 kg



## WELLING/LUDVIK



**Pato Veneer Office — Model 4023**

Veneer  
W: 68,5 cm, D: 62 cm  
H: 78-88 cm, Sh: 43.5-53.5 cm  
Wt: 9.7 kg



**Pato Veneer Office — Model 4024**

Veneer, seat upholstered  
W: 68.5 cm, D: 62 cm  
H: 78-88 cm, Sh: 44.5-54.5 cm  
Wt: 10 kg



**Pato Office Armchair — Model 4030**

Polypropylene  
W: 68.5 cm, D: 62 cm  
H: 78-88 cm, Sh: 43.5-53.5 cm  
Wt: 9.9 kg



**Pato Office Armchair — Model 4031**

Polypropylene, seat upholstered  
W: 68.5 cm, D: 62 cm  
H: 78-88 cm, Sh: 44.5-54.5 cm  
Wt: 10.2 kg



**Pato Office Armchair — Model 4032**

Fully upholstered  
W: 68.5 cm, D: 62 cm  
H: 78-88 cm, Sh: 44.5-54.5 cm  
Wt: 10.3 kg



**Pato Veneer Office Armchair — Model 4033**

Veneer  
W: 68.5 cm, D: 62 cm  
H: 78-88 cm, Sh: 43.5-53.5 cm  
Wt: 9.9 kg



**Pato Veneer Office Armchair — Model 4034**

Veneer, seat upholstered  
W: 68.5 cm, D: 62 cm  
H: 78-88 cm, Sh: 44.5-54.5 cm  
Wt: 10.2 kg



## WELLING/LUDVIK



**Pato Executive — Model 4052**

Fully upholstered  
W: 63 cm, D: 55.5 cm  
H: 86.5 cm, Sh: 48.5 cm  
Wt: 10.5 kg



**Pato Executive Office — Model 4072**

Fully upholstered  
W: 72 cm, D: 70 cm  
H: 81.5-95 cm, Sh: 44.5-54.5 cm  
Wt: 11.9 kg



**Pato Column Chair — Model 4080**

Polypropylene  
W: 45 cm, D: 51 cm  
H: 79 cm, Sh: 46.5 cm  
Wt: 8 kg



**Pato Column Chair — Model 4081**

Polypropylene, seat upholstered  
W: 45 cm, D: 51 cm  
H: 79 cm, Sh: 47.5 cm  
Wt: 8.7 kg



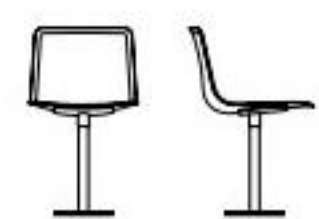
**Pato Column Chair — Model 4082**

Fully upholstered  
W: 45.5 cm, D: 51.5 cm  
H: 79.5 cm, Sh: 47.5 cm  
Wt: 8.9 kg



**Pato Veneer Column Chair — Model 4083**

Veneer  
W: 45 cm, D: 51 cm  
H: 79 cm, Sh: 46.5 cm  
Wt: 8 kg



**Pato Veneer Column Chair — Model 4084**

Veneer, seat upholstered  
W: 45 cm, D: 51 cm  
H: 79 cm, Sh: 47.5 cm  
Wt: 8.7 kg



WELLING/LUDVIK



**Pato Column Armchair — Model 4090**  
 Polypropylene  
 W: 63 cm, D: 50 cm  
 H: 79 cm, Sh: 46.5 cm  
 Wt: 9.1 kg



**Pato Column Armchair — Model 4091**  
 Polypropylene, seat upholstered  
 W: 63 cm, D: 50 cm  
 H: 79 cm, Sh: 47.5 cm  
 Wt: 9.8 kg



**Pato Column Armchair — Model 4092**  
 Fully upholstered  
 W: 63 cm, D: 50 cm  
 H: 79.5 cm, Sh: 47.5 cm  
 Wt: 10 kg



**Pato Veneer Column Armchair — Model 4093**  
 Veneer  
 W: 63 cm, D: 50 cm  
 H: 79 cm, Sh: 46.5 cm  
 Wt: 9.1 kg



**Pato Veneer Column Armchair — Model 4094**  
 Veneer, seat upholstered  
 W: 63 cm, D: 50 cm  
 H: 79 cm, Sh: 47.5 cm  
 Wt: 9.8 kg



**Pato Sledge — Model 4100**  
 Polypropylene  
 W: 54.5 cm, D: 51 cm  
 H: 79 cm, Sh: 46.5 cm, Wt: 6.2 kg  
 Stack: 25 pcs, Base coupling



**Pato Sledge — Model 4101**  
 Polypropylene, seat upholstered  
 W: 54.5 cm, D: 51 cm  
 H: 79 cm, Sh: 47.5 cm, Wt: 6.7 kg  
 Stack: 20 pcs, Base coupling



**Pato Sledge — Model 4102**  
 Fully upholstered  
 W: 54.5 cm, D: 51.5 cm  
 H: 79.5 cm, Sh: 47.5 cm, Wt: 7 kg  
 Stack: 20 pcs, Base coupling





## WELLING/LUDVIK



**Pato Veneer Sledge — Model 4103**  
Veneer  
W: 54.5 cm, D: 51 cm  
H: 79 cm, Sh: 46.5 cm, Wt: 6.2 kg  
Stack: 25 pcs, Base coupling



**Pato Veneer Sledge — Model 4104**  
Veneer, seat upholstered  
W: 54.5 cm, D: 51 cm  
H: 79 cm, Sh: 47.5 cm, Wt: 6.7 kg  
Stack: 20 pcs, Base coupling



**Pato Sledge Armchair — Model 4110**  
Polypropylene  
W: 55.5 cm, D: 51.5 cm  
H: 79 cm, Sh: 46.5 cm, Wt: 6.8 kg  
Stack: 23 pcs, Base coupling



**Pato Sledge Armchair — Model 4111**  
Polypropylene, seat upholstered  
W: 55.5 cm, D: 51.5 cm  
H: 79 cm, Sh: 47.5 cm, Wt: 7.3 kg  
Stack: 15 pcs, Base coupling



**Pato Sledge Armchair — Model 4112**  
Fully upholstered  
W: 55.5 cm, D: 52 cm  
H: 79.5 cm, Sh: 47.5 cm, Wt: 7.8 kg  
Stack: 15 pcs, Base coupling



**Pato Veneer Sledge Armchair — Model 4113**  
Veneer  
W: 55.5 cm, D: 51.5 cm  
H: 79 cm, Sh: 46.5 cm, Wt: 6.8 kg  
Stack: 23 pcs, Base coupling



**Pato Veneer Sledge Armchair — Model 4114**  
Veneer, seat upholstered  
W: 55.5 cm, D: 51.5 cm  
H: 79 cm, Sh: 47.5 cm, Wt: 7.3 kg  
Stack: 15 pcs, Base coupling



WELLING/LUDVIK



**Pato 4 Leg — Model 4200**  
 Polypropelene  
 W: 55 cm, D: 52 cm  
 H: 79 cm, Sh: 46.5 cm, Wt: 5.4 kg  
 Stack: 25 pcs, Base coupling



**Pato 4 Leg — Model 4201**  
 Polypropylene, seat upholstered  
 W: 55 cm, D: 52 cm  
 H: 79 cm, Sh: 47.5cm, Wt: 5.9 kg  
 Stack: 20 pcs, Base coupling



**Pato 4 Leg — Model 4202**  
 Fully upholstered  
 W: 55 cm, D: 52.5 cm  
 H: 80 cm, Sh: 47.5 cm, Wt: 6.1 kg  
 Stack: 20 pcs, Base coupling



**Pato Veneer 4 Leg — Model 4203**  
 Veneer  
 W: 55 cm, D: 52 cm, H: 79 cm  
 Sh: 46.5 cm, Wt: 5.4 kg  
 Stack: 23 pcs



**Pato Veneer 4 Leg — Model 4204**  
 Veneer, seat upholstered  
 W: 55 cm, D: 52 cm, H: 79 cm  
 Sh: 47.5 cm, Wt: 5.9 kg  
 Stack: 15 pcs



**Pato 4 Leg Writing Tablet — Model 4205**  
 Polypropylene  
 W: 60 cm, D: 58 cm  
 H: 79 cm, Sh: 46.5 cm, Wt: 6.3 kg  
 Stack: 4 pcs



**Pato 4 Leg Writing Tablet — Model 4206**  
 Polypropylene, seat upholstered  
 W: 60 cm, D: 58 cm  
 H: 79 cm, Sh: 47.5 cm, Wt: 7 kg  
 Stack: 4 pcs



**Pato 4 Leg Writing Tablet — Model 4207**  
 Fully upholstered  
 W: 60 cm, D: 58 cm  
 H: 80 cm, Sh: 47.5 cm, Wt: 7.2 kg  
 Stack: 4 pcs



## WELLING/LUDVIK



**Pato Veneer 4 Leg Writing Tablet — Model 4208**

Veneer  
W: 60 cm, D: 58 cm  
H: 79 cm, Sh: 46.5 cm, Wt: 6.3 kg  
Stack: 4 pcs



**Pato Veneer 4 Leg Writing Tablet — Model 4209**

Veneer, seat upholstered  
W: 60 cm, D: 58 cm  
H: 79 cm, Sh: 47.5 cm, Wt: 7 kg  
Stack: 4 pcs



**Pato 4 Leg Armchair — Model 4210**

Polypropylene  
W: 57 cm, D: 52 cm  
H: 79 cm, Sh: 46.5 cm, Wt: 5.9 kg  
Stack: 23 pcs, Base coupling



**Pato 4 Leg Armchair — Model 4211**

Polypropylene, seat upholstered  
W: 57 cm, D: 52 cm  
H: 79 cm, Sh: 47.5 cm, Wt: 6.3 kg  
Stack: 15 pcs, Base coupling



**Pato 4 Leg Armchair — Model 4212**

Fully upholstered  
W: 57 cm, D: 52.5 cm  
H: 79.5 cm, Sh: 47.5 cm, Wt: 6.6 kg  
Stack: 15 pcs, Base coupling



**Pato Veneer 4 Leg Armchair — Model 4213**

Veneer  
W: 57 cm, D: 52 cm  
H: 79 cm, Sh: 46.5 cm, Wt: 5.9 kg  
Stack: 23 pcs, Base coupling



**Pato Veneer 4 Leg Armchair — Model 4214**

Veneer, seat upholstered  
W: 57 cm, D: 52 cm  
H: 79 cm, Sh: 47.5 cm, Wt: 6.3 kg  
Stack: 15 pcs, Base coupling

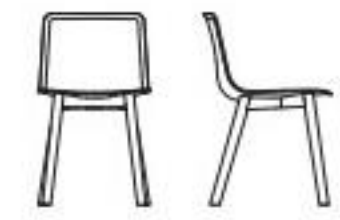


# WELLING/LUDVIK



**Pato Veneer Wood Base — Model 4220**

Veneer  
W: 44.8 cm, D: 53 cm  
H: 77.5 cm, Sh: 46.5 cm  
Wt: 4.3 kg



**Pato Veneer Wood Base — Model 4221**

Veneer, seat upholstered  
W: 44.8 cm, D: 53 cm  
H: 77.5 cm, Sh: 47.5 cm  
Wt: 4.8 kg



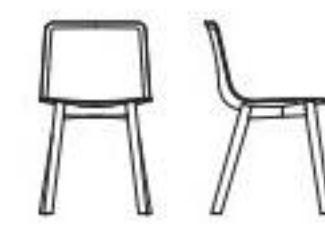
**Pato Wood Base — Model 4225**

Polypropylene  
W: 44.8 cm, D: 53 cm  
H: 77.5 cm, Sh: 46.5 cm  
Wt: 4.6 kg



**Pato Wood Base — Model 4226**

Polypropylene, seat upholstered  
W: 44.8 cm, D: 53 cm  
H: 77.5 cm, Sh: 47.5 cm  
Wt: 5.3 kg



**Pato Wood Base — Model 4222**

Fully upholstered  
W: 44.8 cm, D: 53 cm  
H: 78 cm, Sh: 47.5 cm  
Wt: 5.2 kg



**Pato Sledge Barstool — Model 4300**

Polypropylene  
W: 47 cm, D: 50 cm  
H: 97/109 cm, Sh: 66/77 cm  
Wt: 7.5 kg



**Pato Sledge Barstool — Model 4301**

Polypropylene, seat upholstered  
W: 47 cm, D: 50 cm  
H: 97/109 cm, Sh: 67/78 cm  
Wt: 7.7 kg



**Pato Sledge Barstool — Model 4302**

Fully upholstered  
W: 47 cm, D: 50 cm  
H: 98/110 cm, Sh: 67/78 cm  
Wt: 8.0 kg



## WELLING/LUDVIK



**Pato Veneer Sledge Barstool — Model 4303**

Veneer  
W: 47 cm, D: 50 cm  
H: 97/109 cm, Sh: 66/77 cm  
Wt: 6.9 kg



**Pato Veneer Sledge Barstool — Model 4304**

Veneer, seat upholstered  
W: 47 cm, D: 50 cm  
H: 97/109 cm, Sh: 67/78 cm  
Wt: 7.7 kg



**Pato 4 Leg Barstool — Model 4305**

Polypropylene  
W: 45.5 cm, D: 51 cm  
H: 97/110 cm, Sh: 66.5/76.5 cm  
Wt: 6.7 kg



**Pato 4 Leg Barstool — Model 4306**

Polypropylene, seat upholstered  
W: 45.5 cm, D: 51 cm  
H: 97/110 cm, Sh: 67.5/77.5 cm  
Wt: 7.4 kg



**Pato 4 Leg Barstool — Model 4307**

Fully upholstered  
W: 45.5 cm, D: 51 cm  
H: 98/111 cm, Sh: 67.5/77.5 cm  
Wt: 7.3 kg



**Pato Veneer 4 Leg Barstool — Model 4308**

Veneer  
W: 45.5 cm, D: 51 cm  
H: 97/110 cm, Sh: 66.5/76.5 cm  
Wt: 6.2 kg



**Pato Veneer 4 Leg Barstool — Model 4309**

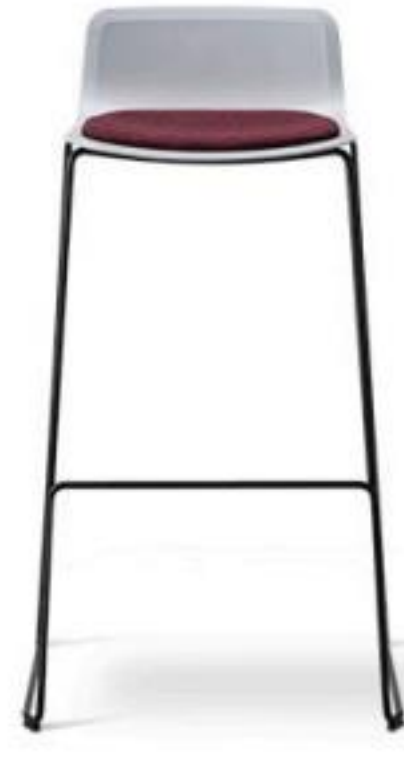
Veneer, seat upholstered  
W: 45.5 cm, D: 51 cm  
H: 97/110 cm, Sh: 67.5/77.5 cm  
Wt: 6.9 kg



WELLING/LUDVIK



**Pato Stool — Model 4310**  
Polypropelene  
W: 49.5 cm, D: 46.5 cm, H: 83/93 cm,  
Sh: 67/77 cm, Wt: 5.8/6.1 kg  
Stack: 15 pcs



**Pato Stool — Model 4311**  
Polypropylene, seat upholstered  
W: 49.5 cm, D: 46.5 cm, H: 83/93 cm  
Sh: 68/78 cm Wt: 6.4/6.7 kg  
Stack: 12 pcs



**Pato Stool — Model 4312**  
Fully upholstered  
W: 49.5 cm, D: 46.5 cm, H: 84/94 cm  
Sh: 68/78 cm, Wt: 6.1/6.4 kg  
Stack: 12 pcs



**Pato Lounge Sledge — Model 4372**  
Fully upholstered  
W: 63 cm, D: 69 cm  
H: 72 cm, Sh: 40 cm  
Wt: 9 kg



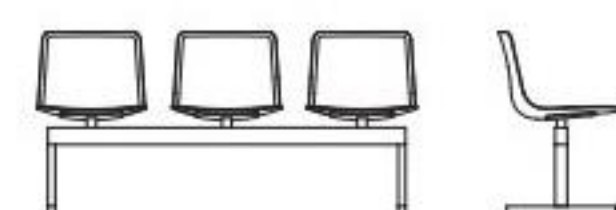
**Pato Lounge Swivel — Model 4382**  
Fully upholstered  
W: 63 cm, D: 67 cm  
H: 71 cm, Sh: 39 cm  
Wt: 11 kg



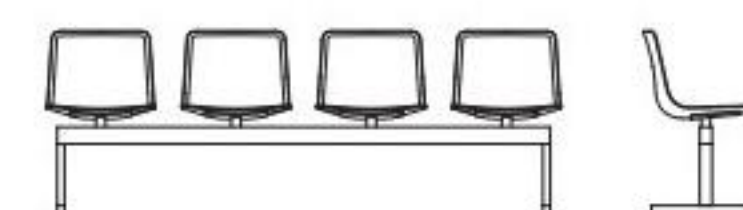
**Pato Lounge Wood Base — Model 4392**  
Fully upholstered  
W: 63 cm, D: 67 cm  
H: 71 cm, Sh: 39 cm  
Wt: 11 kg



**Pato Bench — Model 4330**  
Polypropylene / veneer  
W: 157 cm, D: 51.5 cm  
H: 78 cm, Sh: 46 cm  
Wt: 27.5 kg



**Pato Bench — Model 4340**  
Polypropylene / veneer  
L: 213 cm, D: 51.5 cm  
H: 78 cm, Sh: 46 cm  
Wt: 35.5 kg

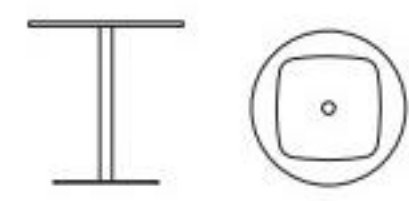


WELLING/LUDVIK



**Mesa Café Table — Model 4670**

Ø: 70 cm  
H: 71/105 cm  
Wt: 18 kg



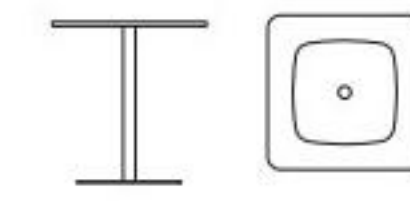
**Mesa Café Table — Model 4671**

L: 70 cm, W: 60 cm  
H: 71/105 cm  
Wt: 18 kg



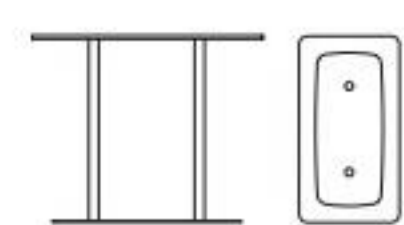
**Mesa Café Table — Model 4672**

L: 70 cm, W: 70 cm  
H: 71/105 cm  
Wt: 19 kg



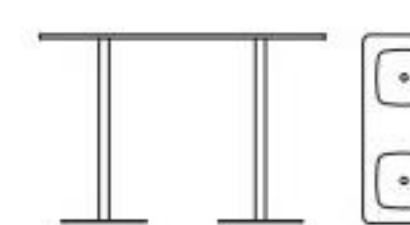
**Mesa Table — Model 4678**

L: 130 cm, W: 70 cm  
H: 71/105 cm  
Wt: 41.5 kg



**Mesa Table — Model 4679**

L: 160 cm, W: 70 cm  
H: 71/105 cm  
Wt: 40 kg



**Mesa Table — Model 4612**

L: 120 cm, W: 120 cm  
H: 73/96/105 cm



**Mesa Table — Model 4613**

L: 130 cm, W: 130 cm  
H: 73/96/105 cm



**Mesa Table — Model 4616**

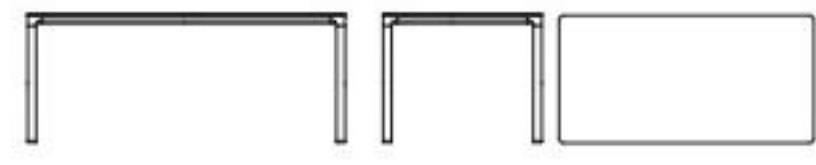
L: 160 cm, W: 90 cm  
H: 73/96/105 cm



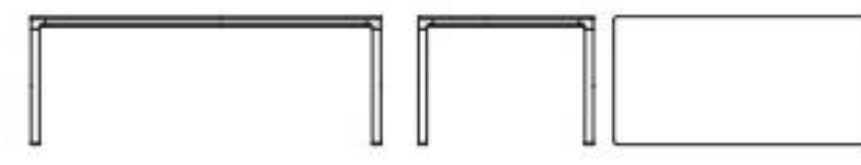
WELLING/LUDVIK



**Mesa Table — Model 4618**  
L: 180 cm, W: 90 cm  
H: 73/96/105 cm



**Mesa Table — Model 4620**  
L: 200 cm, W: 100 cm  
H: 73/96 cm



**Mesa Table — Model 4622**  
L: 200 cm, W: 120 cm  
H: 73/96 cm



**Mesa Table — Model 4623**  
L: 220 cm, W: 120 cm  
H: 73 cm



**Mesa Table — Model 4626**  
L: 260 cm, W: 120 cm  
H: 73 cm



**Mesa Table — Model 4630**  
L: 300 cm, W: 120 cm  
H: 73 cm







# CONTACT

info@fredericia.com

+45 7592 3344

## HQ, SALES & PRODUCTION

Fredericia Furniture A/S • Treldevej 183 • DK-7000 Fredericia  
sales@fredericia.com

## MARKETING

Fredericia Furniture A/S • Løvstræde 1, 4. floor • DK-1152 Copenhagen  
marketing@fredericia.com

## FREDERICIA SHOWROOM

Løvstræde 1, 4. floor • DK-1152 Copenhagen

## FOLLOW US



## COLLECTION PHOTOGRAPHER

Enok Holsegaard

## OTHER PHOTOGRAPHERS

Mads Flummer, Anders Hviid, Philip Høpner, Marie Frost, Richard Powers, Jesper Ray

## THANKS TO

Leif Sigersen, Astep, Pulpo, Flos, Mathias Møllenbach, Studio Arhøj, Stilleben, Michael Kristensen,  
Linie Design, Anker & Co., Wästberg, Uh La La Ceramics, Society Limonta, Tortus Copenhagen, Massimo,  
Styrelsen for International Rekruttering og Integration



